

MATERIAL HANDLING

SAFETY AND PRODUCTIVITY

DESIGN

With features such as dual pawl brakes and steel drop stops, our products are designed with your safety in mind.

QUALITY

Using materials like Chrome Molybdenum load gears and the world's strongest grade 105 load chain, our products are built with quality you can depend on.

STANDARDS

JET Material Handling products are individually load tested and built to meet or exceed ANSI standards.

DID YOU KNOW?

JET products are fully serviceable and parts are available to help extend their life



TABLE OF CONTENTS

Electric Hoists		555	
Single Speed Hoists.....	556	Accessories.....	557
Chain Hoists		559	
Chain Hoists.....	560-569	Chain Hoists with Overload Protection..	564-565
Lever Chain Pullers		570	
Lever Chain Pullers.....	570-579	Hand Cable Pullers.....	581
Wire Rope Pullers.....	580		
Trolleys and Clamps		582	
Beam Clamps.....	583	Plate Clamps.....	586
Manual Trolleys.....	585	Drum Lifter.....	586
Blocks & Sheaves		587	
Yarding Blocks.....	587	Sheaves.....	587
Snatch Blocks.....	587		
Winches		588	
Hand Winches.....	588		
Pallet Truck / Scissor Lift Hand Cart		589	
Warranty Policy.....	590	Safety Guide.....	591

ICON LEGEND

Good Quality		Overload Protection	
Better Quality		Canadian Standard for Over 25 Years	
Best Quality		Canadian Standard for Over 45 Years	
Super Heavy Duty		New	
Safety Hook		JET Exclusive	



ELECTRIC HOISTS





SINGLE SPEED HOISTS

FA Series – Heavy Duty

- Available in single phase or three phase models and various voltages (specify when ordering)
- 1/2 ton - 5 ton capacities
- Chain is heat treated, case hardened, low wear chain surpassing ISO Class T
- All models complete with chain collector bucket
- Reliable electro-magnetic DC brake engages automatically when power is cut off
- Two button pendant control automatically returns to OFF mode when either button is released
- 24 volt pendant control for operator safety in damp or humid conditions
- Strain relief cable protects electrical connections
- Top and bottom safety hooks designed to bend slowly to warn of overloads
- Upper and lower limit switches protect hoist from damage if load or chain stop contacts body
- Gear train and electrical components completely sealed for use outdoors (cover recommended)
- Modular construction of motor, gear train, and brake assembly allows for quick and easy maintenance
- Single phase hoists equipped with automatic overload protection preset to 110% of rated capacity
- Three phase hoists feature reverse phase protection
- Meets ASME B30.16, CSA, and OSHA standards
- Made in Japan

Note: Custom lifts are available in any length desired



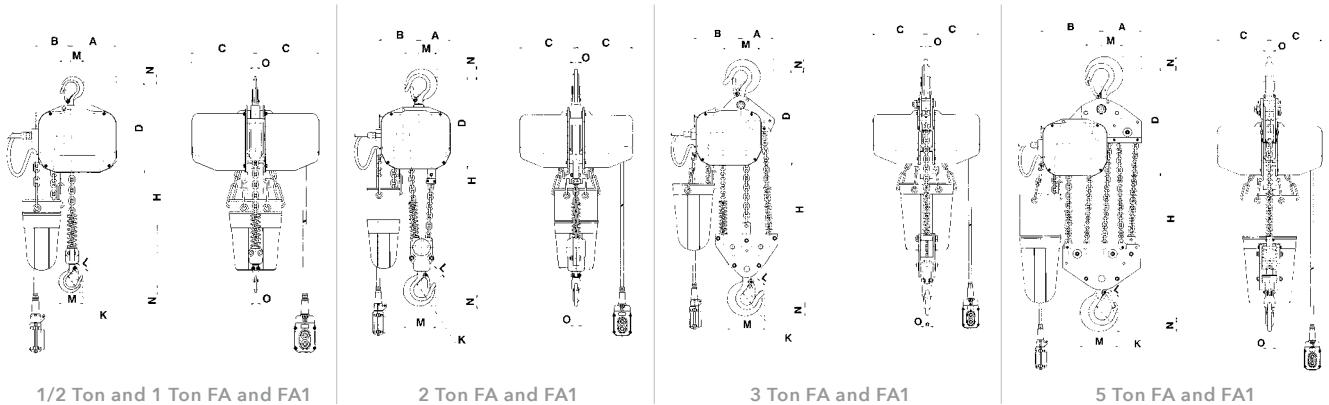
PROD. NO.	MOD. NO.	Rated Lifting Capacity (Tons)	Rated Lifting Capacity (lb)	Standard Lift	Standard Chain Bucket	Hoisting Speed FPM	Voltage	Power Source
107202	FA1-0.5S	1/2	1,100	15'	#2	14	115 / 230V	1PH
107203	FA1-1S	1	2,200	15'	#2	10	115 / 230V	1PH
107204	FA1-2S	2	4,400	15'	#3	5	115 / 230V	1PH
107205	FA1-3S	3	6,600	15'	#4	3.3	115 / 230V	1PH
107206	FA-1-5S	5	11,000	15'	#5	2	115 / 230V	1PH
107212	FA-0.5S	1/2	1,100	15'	#2	28	230 / 460V	3PH
107213	FA-1S	1	2,200	15'	#2	24.2	230 / 460V	3PH
107214	FA-2S	2	4,400	15'	#3	12.1	230 / 460V	3PH
107215	FA-3S	3	6,600	15'	#4	8	230 / 460V	3PH
107216	FA-5S	5	11,000	15'	#5	4.8	230 / 460V	3PH
107262	FA-0.5S	1/2	1,100	15'	#2	28	575V	3PH
107263	FA-1S	1	2,200	15'	#2	24.2	575V	3PH
107264	FA-2S	2	4,400	15'	#3	12.1	575V	3PH
107265	FA-3S	3	6,600	15'	#4	8	575V	3PH
107266	FA-5S	5	11,000	15'	#5	4.8	575V	3PH

Chain Buckets

- Standard lift hoists are equipped with appropriate bucket. For extended lift hoists, multiply the feet of lift desired by the number of falls to obtain total chain length. Choose appropriate bucket from the list below.



PROD. NO.	MOD. NO	Maximum Chain Length 1/2 Ton	Maximum Chain Length 1-5 Ton	Number of Falls
PEL-21-2	#2	30'	20'	1/2 ton + 1 ton - 1
PEL-21-3	#3	50'	40'	2 ton - 2
PEL-21-4	#4	70'	60'	3 ton - 3
PEL-21-5	#5	120'	110'	5 ton - 5
PEL-21-6	#6	-	180'	-



1/2 Ton and 1 Ton FA and FA1

2 Ton FA and FA1

3 Ton FA and FA1

5 Ton FA and FA1

Rated Lifting Capacity (Tons)	A	B	C	D	H	K	L	M	N	O
1/2	6.34"	4.88"	8.82"	12.24"	18.90"	1.42"	1.02"	3.39"	.94"	.75"
1	6.69"	5.04"	9.41"	13.72"	22.44"	1.69"	1.30"	4.21"	1.22"	.91"
2	5.24"	6.50"	9.41"	14.65"	27.95"	2.09"	1.65"	5.67"	1.73"	1.18"
3	5.83"	8.19"	9.41"	16.81"	31.89"	2.36"	1.97"	6.50"	1.93"	1.38"
5	7.20"	10.75"	9.41"	19.21"	35.43"	2.76"	2.36"	7.44"	2.24"	1.65"

Head Room	Motor HP	Duty Rating in Minutes	Power Cable Length	Number of Falls	Amps	Shipping Weight lb (kg) *
18.9"	0.6	25	16'	1	9.6 / 5.3	115.0 (52.30)
22.44"	1.2	25	16'	1	13 / 10.5	154.7 (70.3)
27.95"	1.2	25	16'	2	13 / 10.5	183.6 (83.5)
31.89"	1.2	25	16'	3	13 / 10.5	216 (97.2)
35.43"	1.2	25	16'	5	13 / 10.5	283 (127.4)
18.9"	1.2	30	16'	1	2.9 / 1.7	98 (44.1)
22.44"	2.1	30	16'	1	5.8 / 3.2	138 (62.1)
27.95"	2.1	30	16'	2	5.8 / 3.2	157 (70.7)
31.89"	2.1	30	16'	3	5.8 / 3.2	205 (92.3)
35.43"	2.1	30	16'	5	5.8 / 3.2	278 (125.1)
18.9"	1.2	30	16'	1	1.4	98 (44.1)
22.44"	2.1	30	16'	1	5.8	138 (62.1)
27.95"	2.1	30	16'	2	5.8	157 (70.7)
31.89"	2.1	30	16'	3	2.6	205 (92.3)
35.43"	2.1	30	16'	5	2.6	278 (125.1)

* Shipping weights are approximate



JET

CHAIN HOISTS



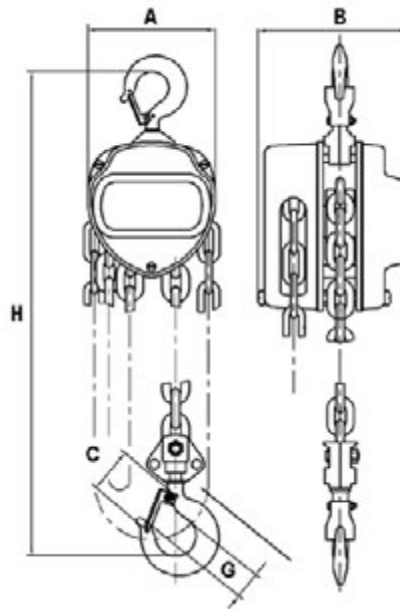
 TM **10 TON**
JET L-90 SERIES CHAIN HOIST
PALAN À CHAÎNE JET SÉRIE L-90
SERIAL No. 22775



CHAIN HOISTS

VCH Series

- Triple spur geared for efficient operation
- Hardened steel roller bearings support load sheave for easy operation
- Dual pawl Weston style brake for safe reliable operation
- Exclusive premium grade, non-asbestos brake discs for longest life
- Grade 80 load chain
- Top and bottom safety hooks bend slowly to warn of overloads
- Load tested to 150% of rated capacity with certificate
- Meets ASME B30.16 standards
- ISO 9001-2000 certified factory
- **NOTE:** Custom Lifts are available in any length desired



Rated Lifting Capacity (Tons)	A	B	C	G	H
1/2	4-15/16"	4-13/16"	35mm	27mm	11-1/32"
1	5-3/4"	5-1/2"	45mm	33mm	12-1/16"
2	7-1/4"	6-1/4"	52mm	33.5mm	17-1/2"

PROD. NO.	MOD. NO.	Rated Lifting Capacity (Tons)	Rated Lifting Capacity (lb)	Standard Lift
101002	VCH-0510	1/2	1,100	10'
101006	VCH-0520	1/2	1,100	20'
101012	VCH-1010	1	2,200	10'
101016	VCH-1020	1	2,200	20'
101032	VCH-2010	2	4,400	10'
101036	VCH-2020	2	4,400	20'



SAFETY HOOKS

Top and bottom safety hooks bend slowly to warn of overloads. Load tested to 150% of rated capacity with certificate.

Head Room	Number of Falls	Load Chain Diameter	Force Req. to Lift Capacity (lb)	Length of Hand Chain Pulled to Lift Load 1 ft	Shipping Weight lb (kg) *
11-1/32"	1	6.0mm	49	27'	20.3 (9.2)
11-1/32"	1	6.0mm	49	27'	31.5 (14.3)
12-1/16"	1	6.0mm	68	40'	25.1 (11.4)
12-1/16"	1	6.0mm	68	40'	36.2 (16.5)
17-1/2"	1	8.0mm	102	70'	39.5 (18)
17-1/2"	1	8.0mm	102	70'	55.7 (25.3)

* Shipping weights are approximate

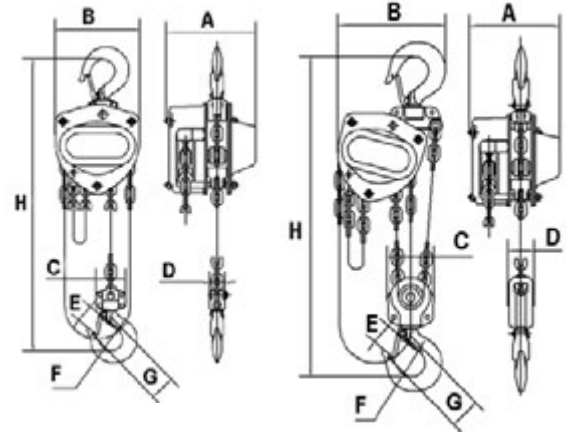


CHAIN HOISTS

KCH Series - Heavy Duty

- Triple spur geared for efficient operation
- Exclusive premium grade, non-asbestos brake discs for longest life
- Grade 100 load chain for greater strength
- Top and bottom safety hooks bend slowly to warn of overloads
- Load tested to 150% of rated capacity with certificate
- Meets ASME B30.16 standards
- ISO 9001-2000 certified factory
- **NOTE: Custom lifts are available in any length desired**

BETTER**



Rated Lifting Capacity (Tons)	A	B	C	D	E	F	G	H
1/2	5-1/8"	5-1/2"	1-5/8"	1"	27mm	32mm	35mm	11-1/4"
1	6-5/16"	6-5/16"	2"	1-1/8"	33mm	40mm	45mm	11-5/8"
2	7-1/4"	8"	2-1/2"	1-3/8"	37mm	46mm	52mm	14-3/4"
3	6-5/8"	9-1/4"	4-1/8"	2-1/16"	43.5mm	52mm	62.5mm	20"
5	7-1/2"	11-1/8"	2-5/8"	2-1/2"	51mm	60mm	78mm	23-5/8"

PROD. NO.	MOD. NO.	Rated Lifting Capacity (Tons)	Rated Lifting Capacity (lb)	Standard Lift	Head Room	Number of Falls	Load Chain Diameter
101102	KCH-0510	1/2	1,100	10'	11-1/4"	1	5.0mm
101106	KCH-0520	1/2	1,100	20'	11-1/4"	1	5.0mm
101112	KCH-1010	1	2,200	10'	11-5/8"	1	6.3mm
101116	KCH-1020	1	2,200	20'	11-5/8"	1	6.3mm
101132	KCH-2010	2	4,400	10'	14-3/4"	1	8.0mm
101136	KCH-2020	2	4,400	20'	14-3/4"	1	8.0mm
101142	KCH-3010	3	6,600	10'	20"	2	7.1mm
101146	KCH-3020	3	6,600	20'	20"	2	7.1mm
101152	KCH-5010	5	11,000	10'	23-5/8"	2	9.0mm
101156	KCH-5020	5	11,000	20'	23-5/8"	2	9.0mm
101162	KCH-10010	10	22,000	10'	29-15/16"	3	10.0mm
101172	KCH-15010	15	33,000	10'	39-3/8"	6	9.0mm



Maintenance free sealed bearings reduce operator effort



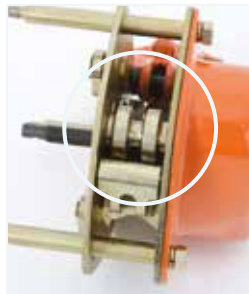
Dual pawl Weston style brake with extra heavy pawl springs for safe reliable operation



Extra thick ratchet gear protects brake disc from contamination



Cast safety latches exceed industry standards



Specialized finish on key internal parts for superior corrosion resistance



Force Req. to Lift Capacity (lb)	Length of Hand Chain Pulled to Lift Load 1 ft	Shipping Weight lb (kg) *
51	25'	19.9 (9)
51	25'	29.1 (13)
64	43'	28.8 (13.1)
64	43'	40.7 (18.5)
79	70'	45.2 (20.6)
79	70'	60.6 (27.6)
79	114'	53.7 (24.4)
79	114'	73.6 (33.5)
83	198'	93.6 (42.6)
83	198'	122.2 (55.6)
90	384.6'	172 (78)
82	602.4'	315 (143)

* Shipping weights are approximate

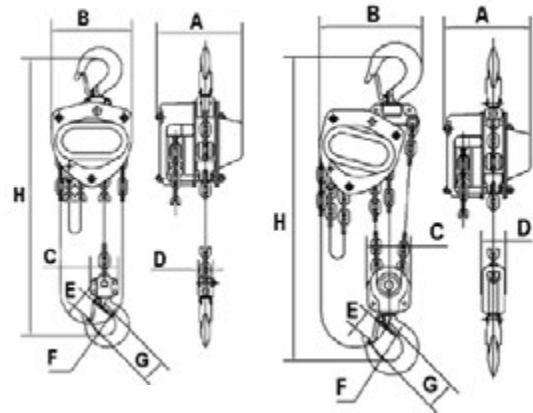


Complete with Overload Protection

KCH SERIES WITH OVERLOAD PROTECTION

KCH Series - Heavy Duty

- KCH Series is equipped with an automatic overload protection device as standard equipment
- Device is factory preset to prevent serious overload of the hoist
- Actuation is automatic, requiring no input from the operator
- Triple Spur geared for efficient operation
- Grade 100 load chain for greater strength
- Exclusive premium grade, non-asbestos brake discs for longest life
- Load tested to 150% of rated capacity with certificate
- Meets ASME B30.16 standards
- ISO 9001-2000 certified factory
- Note: Custom lifts are available in any length desired
- **NOTE: Custom lifts are available in any length desired**



Rated Lifting Capacity (Tons)	A	B	C	D	E	F	G	H
1/2	5-1/8"	5-1/2"	1-5/8"	1"	27mm	32mm	35mm	11-1/4"
1	6-5/16"	6-5/16"	2"	1-1/8"	33mm	40mm	45mm	11-5/8"
2	7-1/4"	8"	2-1/2"	1-3/8"	37mm	46mm	52mm	14-3/4"
3	6-5/8"	9-1/4"	4-1/8"	2-1/16"	43.5mm	52mm	62.5mm	20"
5	7-1/2"	11-1/8"	2-5/8"	2-1/2"	51mm	60mm	78mm	23-5/8"

PROD. NO.	MOD. NO.	Rated Lifting Capacity (Tons)	Rated Lifting Capacity (lb)	Standard Lift	Head Room	Number of Falls	Load Chain Diameter
101302	KCH-0510L	1/2	1,100	10'	11-1/4"	1	5.0mm
101306	KCH-0520L	1/2	1,100	20'	11-1/4"	1	5.0mm
101312	KCH-1010L	1	2,200	10'	11-5/8"	1	6.3mm
101316	KCH-1020L	1	2,200	20'	11-5/8"	1	6.3mm
101332	KCH-2010L	2	4,400	10'	14-3/4"	1	8.0mm
101336	KCH-2020L	2	4,400	20'	14-3/4"	1	8.0mm
101342	KCH-3010L	3	6,600	10'	20"	2	7.1mm
101346	KCH-3020L	3	6,600	20'	20"	2	7.1mm
101352	KCH-5010L	5	11,000	10'	23-5/8"	2	9.0mm
101356	KCH-5020L	5	11,000	20'	23-5/8"	2	9.0mm



KCH SERIES WITH OVERLOAD PROTECTION



Maintenance free sealed bearings reduce operator effort



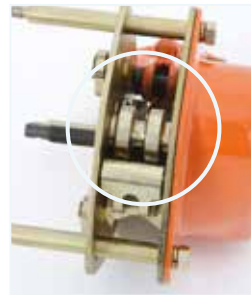
Dual pawl Weston style brake with extra heavy pawl springs for safe reliable operation



Extra thick ratchet gear protects brake disc from contamination



Cast safety latches exceed industry standards



Specialized finish on key internal parts for superior corrosion resistance



OLP device for increased operator safety

Force Req. to Lift Capacity (lb)	Length of Hand Chain Pulled to Lift Load 1 ft	Shipping Weight lb (kg) *
51	25'	19.9 (9)
51	25'	29.1 (13)
64	43'	28.8 (13.1)
64	43'	40.7 (18.5)
79	70'	45.2 (20.6)
79	70'	60.6 (27.6)
79	114'	53.7 (24.4)
79	114'	73.6 (33.5)
83	198'	93.6 (42.6)
83	198'	122.2 (55.6)

* Shipping weights are approximate



CHAIN HOISTS



L-90 Series – Super Heavy Duty

- Exclusive grade 105 is the world's strongest load chain
- Provides unparalleled safety for the most demanding applications
- Chrome Molybdenum load gears for maximum strength and resistance to shock
- Load sheave is designed for long wear with uniform pockets for correct chain contact
- Drop forged hooks are designed to bend slowly to warn of overloads
- Rolled edge on hand wheel cover acts as a chain guide and allows smooth operation even when pulling the hand chain at an angle
- Positive ratchet, screw and disc are completely enclosed to protect the brake mechanism
- Non-asbestos wet friction brake discs will not slip even when oil is present
- Electrostatic powder coated before assembly to protect against rust and corrosion
- Capacity unaffected by temperatures up to -40°C with suitable winter lubrication
- Tested to 150% of rated capacity
- Meets OSHA and ANSI B30.16 standards (certificate included)
- Made in Japan

NOTE: Custom lifts are available in any length desired.

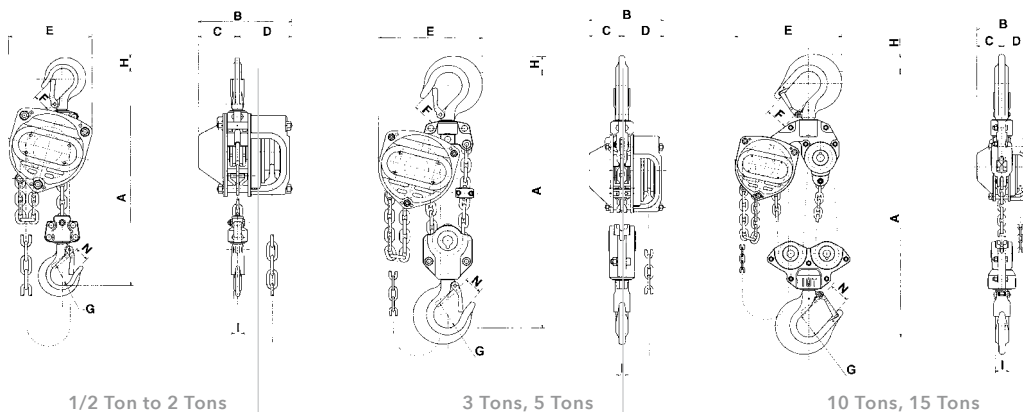


PROD. NO.	MOD. NO.	Rated Lifting Capacity (Tons)	Rated Lifting Capacity (lb)	Standard Lift
101202	L90-0502	1/2	1,100	10'
101204	L90-0504	1/2	1,100	15'
101206	L90-0506	1/2	1,100	20'
101212	L90-1002	1	2,200	10'
101214	L90-1004	1	2,200	15'
101216	L90-1006	1	2,200	20'
101222	L90-1502	1-1/2	3,520	10'
101224	L90-1504	1-1/2	3,520	15'
101226	L90-1506	1-1/2	3,520	20'
101232	L90-2002	2	4,400	10'
101234	L90-2004	2	4,400	15'
101236	L90-2006	2	4,400	20'
101252	L90-3002	3	6,820	10'
101254	L90-3004	3	6,820	15'
101256	L90-3006	3	6,820	20'
101262	L90-5002	5	11,000	10'
101264	L90-5004	5	11,000	15'
101266	L90-5006	5	11,000	20'
101283	L90-10003	10	22,000	11-1/2"
101292	L90-15003	15	30,000	11-1/2"

Special design ensures that chain pin is protected for safety and longer life

Articulating top hook ensures proper positioning

Top and bottom hooks swivel 360° reducing load spin



Rated Lifting Capacity (Tons)	A	B	C	D	E	F	G	H	I	N
1/2	10-3/4"	6-1/8"	2-9/16"	3-9/16"	5-1/2"	1-1/8"	1-7/16"	21/32"	1/2"	1-1/32"
1	11-3/4"	6-5/16"	2-11/16"	3-5/8"	6-5/16"	1-5/16"	1-11/16"	7/8"	5/8"	1-3/16"
1-1/2	13-1/4"	6-5/8"	2-15/16"	3-11/16"	7-3/16"	1-5/16"	1-11/16"	7/8"	5/8"	1-3/16"
2	14-3/4"	7-3/16"	3-1/4"	3-15/16"	8-7/16"	1-11/16"	2-3/32"	1-1/8"	7/8"	1-1/2"
3	20-7/8"	6-5/8"	2-15/16"	3-11/16"	9-1/16"	1-15/16"	2-3/8"	1-7/16"	1-1/16"	1-3/4"
5	24-1/2"	7-1/2"	3-9/16"	3-15/16"	11-1/16"	2-9/32"	2-3/4"	1-13/16"	1-11/32"	2-1/16"
10	30-1/2"	7-1/2"	3-9/16"	3-15/16"	15-1/8"	2-15/16"	3-3/8"	2-15/16"	1-31/32"	2-3/4"
15	38-7/8"	9-1/4"	3-9/16"	5-11/16"	19-3/8"	3-13/16"	4"	3-7/64"	2-7/16"	3-3/16"

Head Room	Number of Falls	Load Chain Diameter	Force Req. to Lift Capacity (lb)	Length of Hand Chain Pulled to Lift Load 1 ft	Shipping Weight lb (kg) *
10-3/4"	1	5.0mm	59	29'	22.7 (10.3)
10-3/4"	1	5.0mm	59	29'	27.2 (12.4)
10-3/4"	1	5.0mm	59	29'	33.8 (15.4)
11-3/4"	1	6.3mm	69	50'	29.4 (13.4)
11-3/4"	1	6.3mm	69	50'	34 (15.4)
11-3/4"	1	6.3mm	69	50'	40.5 (18.4)
13-1/4"	1	7.1mm	91	60'	36.2 (16.5)
13-1/4"	1	7.1mm	91	60'	42.9 (19.5)
13-1/4"	1	7.1mm	91	60'	49.5 (22.5)
14-3/4"	1	8.0mm	88	77'	49.6 (22.5)
14-3/4"	1	8.0mm	88	77'	56.9 (25.9)
14-3/4"	1	8.0mm	88	77'	63.5 (28.9)
20-7/8"	2	7.1mm	104	120'	58 (26.4)
20-7/8"	2	7.1mm	104	120'	68.8 (31.3)
20-7/8"	2	7.1mm	104	120'	77.6 (35.3)
24-1/2"	2	9.0mm	106	190'	96.7 (43.9)
24-1/2"	2	9.0mm	106	190'	109.9 (49.9)
24-1/2"	2	9.0mm	106	190'	125.3 (56.9)
30-1/2"	4	9.0mm	116	385'	199.2 (90.6)
38-7/8"	6	9.0mm	88	556'	41.4 (18.8)

* Shipping weights are approximate



CHAIN HOISTS

L-95 Series (Overload Protect) – Super Heavy Duty

- Series L-95 is equipped with an automatic overload protection device as standard equipment
- Overload protection is pre-set at 120% of rated capacity
- Exclusive grade 105 is the world's strongest load chain
- Provides unparalleled safety for the most demanding applications
- Chrome Molybdenum load gears for maximum strength and resistance to shock
- Load sheave is designed for long wear with uniform pockets for correct chain contact
- Sealed bearings support load and reduce operator effort
- Drop forged hooks are designed to bend slowly to warn of overloads
- Rolled edge on hand wheel cover acts as a chain guide and allows smooth operation even when pulling the hand chain at an angle
- Dual pawl brake is completely enclosed to protect the brake mechanism
- Non-asbestos wet friction brake discs will not slip even when oil is present
- Electrostatic powder coated before assembly to protect against rust and corrosion
- Tested to 150% of rated capacity
- Meets OSHA and ANSI B30.16 standards (certificate included)
- Made in Japan
- **Note: Custom lifts are available in any length desired**



Articulating top hook ensures proper positioning

Complete with overload protection

STRONGEST
LOAD CHAIN
IN THE WORLD

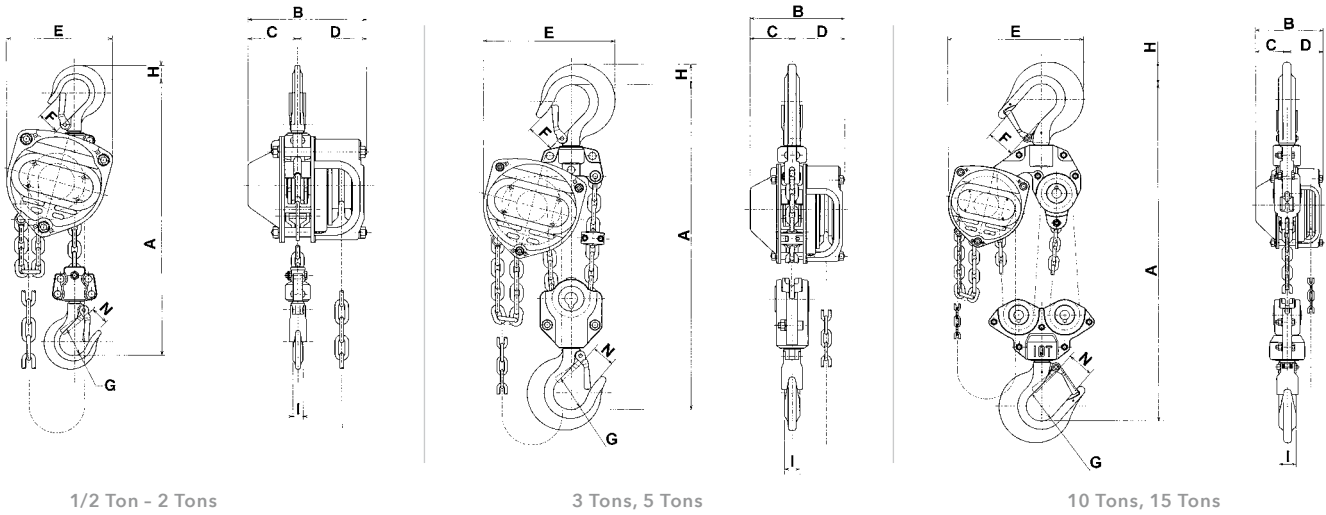
Special design ensures that chain pin is protected for safety and longer life



Top and bottom hooks swivel 360° reducing load spin



PROD. NO.	MOD. NO.	Rated Lifting Capacity (Tons)	Rated Lifting Capacity (lb)	Standard Lift
101402	L95-0502	1/2	1,100	10'
101406	L95-0506	1/2	1,100	20'
101412	L95-1002	1	2,200	10'
101416	L95-1006	1	2,200	20'
101422	L95-1502	1-1/2	3,520	10'
101426	L95-1506	1-1/2	3,520	20'
101432	L95-2002	2	4,400	10'
101436	L95-2006	2	4,400	20'
101452	L95-3002	3	6,820	10'
101456	L95-3006	3	6,820	20'
101462	L95-5002	5	11,000	10'
101466	L95-5006	5	11,000	20'



1/2 Ton - 2 Tons

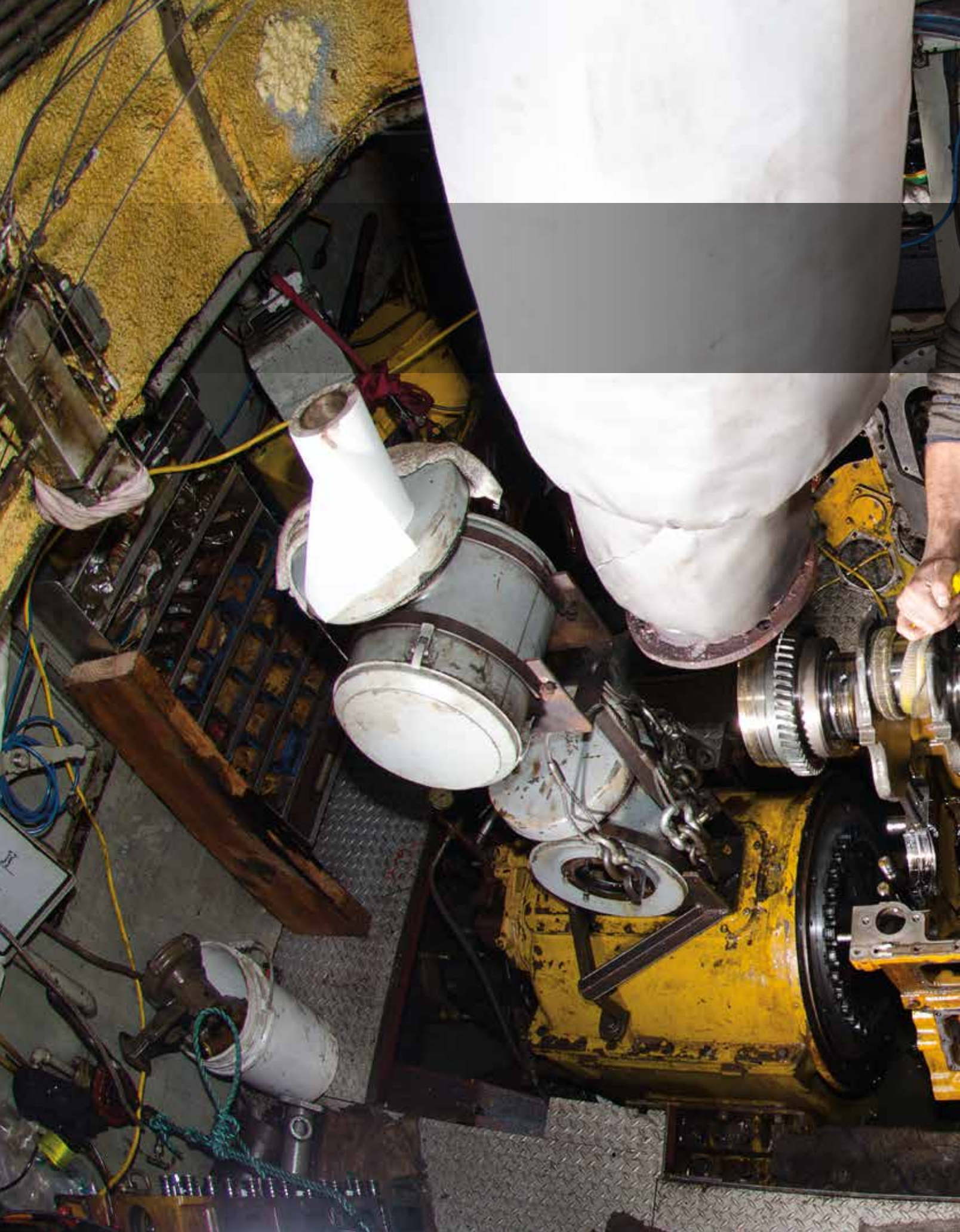
3 Tons, 5 Tons

10 Tons, 15 Tons

Rated Lifting Capacity (Tons)	A	B	C	D	E	F	G	H	I	N
1/2	10-3/4"	6-1/8"	2-9/16"	3-9/16"	5-1/2"	1-1/8"	1-7/16"	21/32"	1/2"	1-1/32"
1	11-3/4"	6-5/16"	2-11/16"	3-5/8"	6-5/16"	1-5/16"	1-11/16"	7/8"	5/8"	1-3/16"
1-1/2	13-1/4"	6-5/8"	2-15/16"	3-11/16"	7-3/16"	1-5/16"	1-11/16"	7/8"	5/8"	1-3/16"
2	14-3/4"	7-3/16"	3-1/4"	3-15/16"	8-7/16"	1-11/16"	2-3/32"	1-1/8"	7/8"	1-1/2"
3	20-7/8"	6-5/8"	2-15/16"	3-11/16"	9-1/16"	1-15/16"	2-3/8"	1-7/16"	1-1/16"	1-3/4"
5	24-1/2"	7-1/2"	3-9/16"	3-15/16"	11-1/16"	2-9/32"	2-3/4"	1-13/16"	1-11/32"	2-1/16"
10	30-1/2"	7-1/2"	3-9/16"	3-15/16"	15-1/8"	2-15/16"	3-3/8"	2-15/16"	1-31/32"	2-3/4"
15	38-7/8"	9-1/4"	3-9/16"	5-11/16"	19-3/8"	3-13/16"	4"	3-7/64"	2-7/16"	3-3/16"

Head Room	Number of Falls	Load Chain Diameter	Force Req. to Lift Capacity (lb)	Length of Hand Chain Pulled to Lift Load 1 ft	Shipping Weight lb (kg) *
10-3/4"	1	5.0mm	49	29'	22.6 (10.3)
10-3/4"	1	5.0mm	49	29'	33.7 (15.3)
11-3/4"	1	6.3mm	56	50'	29.3 (13.3)
11-3/4"	1	6.3mm	56	50'	40.4 (18.4)
13-1/4"	1	7.1mm	75	60'	36.2 (16.5)
13-1/4"	1	7.1mm	75	60'	51.6 (23.5)
14-3/4"	1	8.0mm	73	77'	51.9 (23.6)
14-3/4"	1	8.0mm	73	77'	66.2 (30.1)
20-7/8"	2	7.1mm	77	120'	56 (25.2)
20-7/8"	2	7.1mm	77	120'	79.7 (36.2)
24-1/2"	2	9.0mm	77	190'	97 (43.7)
24-1/2"	2	9.0mm	77	190'	128.4 (58.4)

* Shipping weights are approximate



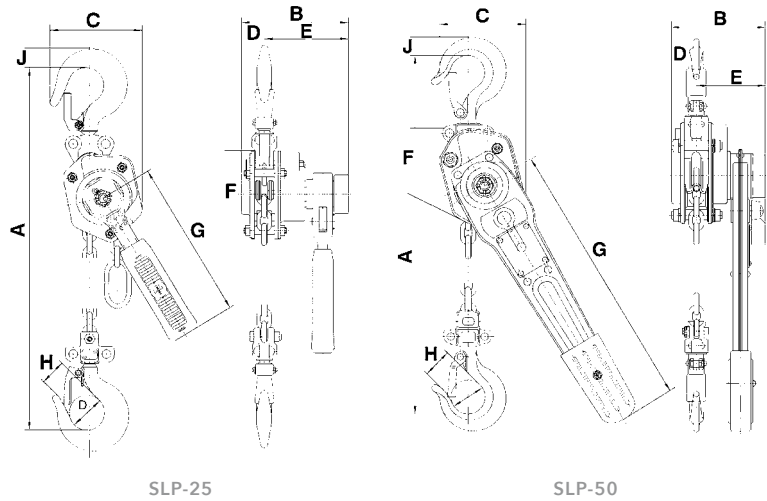
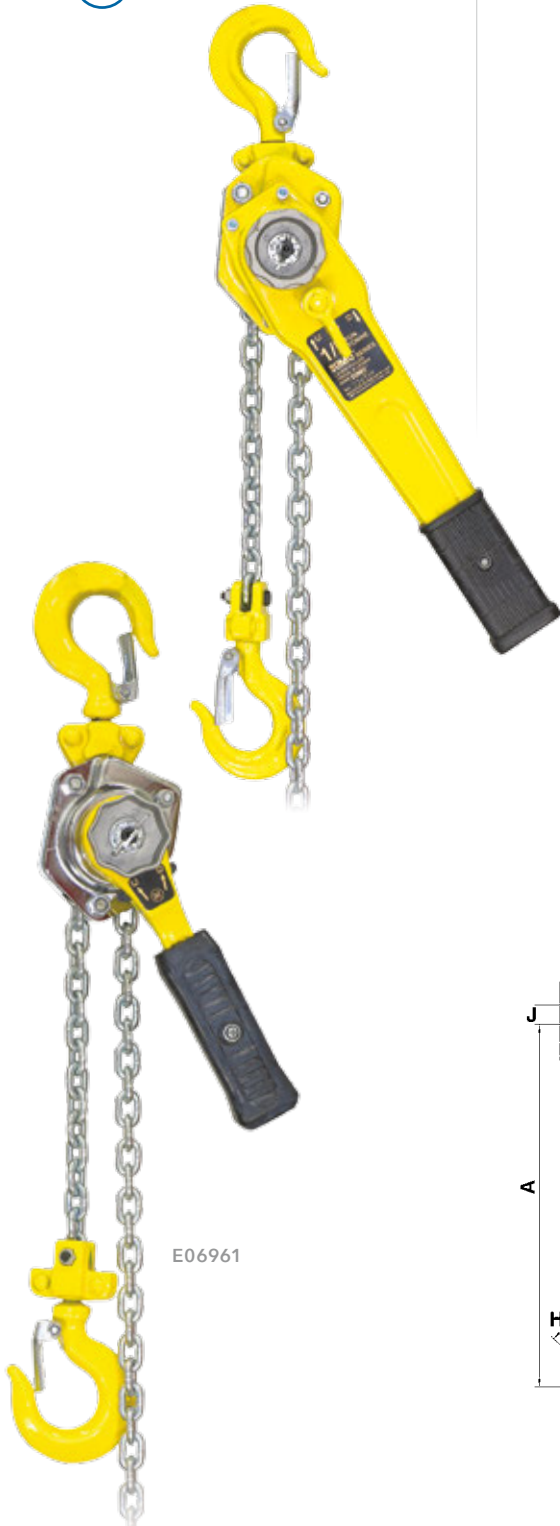
LEVER CHAIN PULLERS



LEVER CHAIN PULLERS

SUMO® Series

- Light weight design combines versatility with economy
- Load tested to 150% of rated capacity
- Meets ANSI B30.21 specifications (Certificate included)
- Special heavy-duty, long-lasting brake pads – last up to five times longer than competitive brands
- Stamped steel housing protects gears and brake mechanism from damage
- Galvanized chain, hub, lever switch and inside plates
- Completely repairable with easy access for maintenance; parts and service are readily available
- Two coats of high visibility safety yellow protective coating
- Short lever length allows for easier access into confined work areas
- High quality load chain meets all international safety standards
- All hooks have safety latches as an additional safety feature and are designed to bend slowly rather than fracture under overload conditions



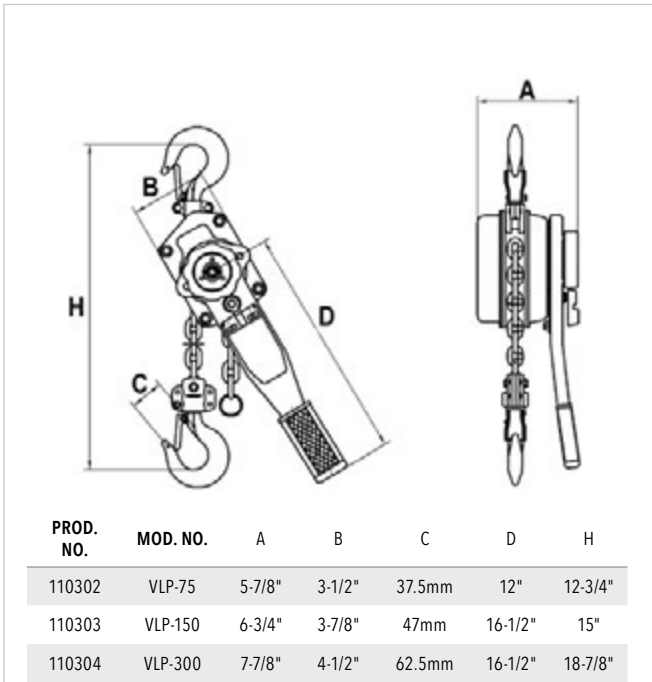
PROD. NO.	MOD. NO.	A	B	C	D	E	F	G	H	J
E06961	SLP-25	8-5/8"	3-5/8"	2-1/4"	7/8"	2-3/4"	3-1/4"	6"	15/16"	3/4"
E06962	SLP-50	11-3/8"	4-5/16"	3	1	3-1/4"	4-7/16"	11-1/4"	1-3/16"	3/4"

PROD. NO.	MOD. NO.	Rated Lifting Capacity (Tons)	Standard Lift	Min Distance Between Hooks	Distance per Handle Pull	Force Req. to Lift Capacity (lb)	Lever Length	Shipping Weight lb (kg) *
E06961	SLP-25	1/4	5'	9-5/8"	2"	66	6"	14.3 (6.5)
E06962	SLP-50	1/2	5'	11-3/8"	1-3/64"	81	11-1/4"	22 (10)

* Shipping weights are approximate

VLP Series

- Cold formed stamped steel housings resist impact
- Grade 80 load chain
- Hardened steel roller bearings support load for easier operation
- Dual pawl Weston style brake for reliable and safe operation
- Exclusive premium grade, non-asbestos brake discs for longest life
- Top and bottom safety hooks bend to warn of overloads
- Deformation indicators on hooks allow accurate measurement for easy maintenance
- Load tested to 150% of rated capacity (with certificate)
- Meets ASME B30.21 standards
- ISO 9001-2000 certified factory
- **NOTE: Custom lifts are available in any length desired**



PROD. NO.	MOD. NO.	Rated Lifting Capacity (Tons)	Standard Lift	Number of Falls	Load Chain Diameter	Min Distance Between Hooks	Force Req. to Lift Capacity (lb)	Lever Length	Shipping Weight lb (kg) *
110302	VLP-75	3/4	5'	1	6.0mm	12"	31	12"	14 (6.4)
110303	VLP-150	1-1/2	5'	1	8.0mm	15"	48	16-1/2"	27.4 (12.5)
110304	VLP-300	3	5'	1	10.0mm	18-7/8"	70	16-1/2"	45.7 (20.8)

* Shipping weights are approximate



LEVER CHAIN PULLERS

KLP Series – Heavy Duty

- High impact gear case and brake cover for heavy duty service
- Grade 100 load chain for greater strength
- Exclusive premium grade, non-asbestos brake discs for longest life
- Top and bottom safety hooks bend to warn of overloads
- Cast steel safety latches exceed industry standards
- Meets ASME B30.21 standards
- ISO 9001-2000 certified factory
- **NOTE: Custom lifts are available in any length desired.**



Caged ball bearings on load sprocket for the ultimate in smooth, easy operation



Dual pawl Weston style brake features extra heavy pawl springs for reliable and safe operation



Deformation indicators on hooks allow accurate measurement for easy maintenance

Load tested to 150% of rated capacity (with certificate)

NEW
NEW

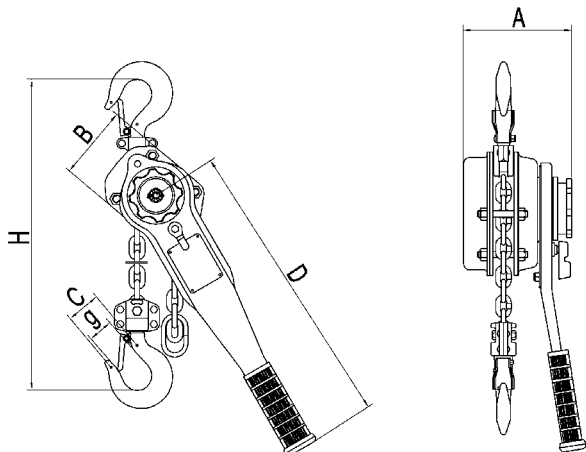
PROD. NO.	MOD. NO.	Rated Lifting Capacity (Tons)	Standard Lift	Number of Falls	Load Chain Diameter	Min Distance Between Hooks
110803	KLP-25-5	1/4	5'	1	3.2mm	7.87"
110804	KLP-50-5	1/2	5'	1	4.3mm	9.84"
110402	KLP-75-5	3/4	5'	1	5.6mm	11"
110406	KLP-75-10	3/4	10'	1	5.6mm	11"
110403	KLP-150-5	1-1/2	5'	1	7.1mm	13-3/4"
110407	KLP-150-10	1-1/2	10'	1	7.1mm	13-3/4"
110404	KLP-300-5	3	5'	1	10.0mm	16-1/2"
110408	KLP-300-10	3	10'	1	10.0mm	16-1/2"
110405	KLP-600-5	6	5"	2	10.0mm	22-7/16"

WITH OVERLOAD PROTECTION



PROD. NO.	MOD. NO.	Rated Lifting Capacity (Tons)	Rated Lifting Capacity (lb)	Standard Lift	Number of Falls	Load Chain Diameter	Head Room
110412	KLP-75-5L	3/4	1,650	5'	1	5.6mm	11"
110413	KLP-150-5L	1-1/2	3,300	5'	1	7.1mm	13-3/4"
110414	KLP-300-5L	3	6,600	5'	1	10.0mm	16-1/2"

Overload Protection for KLP Series



MODEL NO.	A	B	C	D	G	H
KLP-75	5-13/16"	3-1/2"	37.5mm	10-1/2"	28mm	11"
KLP-150	6-1/2"	4-1/4"	47mm	16-1/2"	33.5mm	13-3/4"
KLP-300	7-11/16"	4-1/2"	62.5mm	16-1/4"	43.5mm	16-1/2"
KLP-600	7-11/16"	4-1/2"	78mm	16-1/4"	-	22-7/16"

Force Req. to Lift Capacity (lb)	Lever Length	Shipping Weight lb (kg) *
44	5-7/10"	3.75 (1.7)
52.8	6-3/10"	5.95 (2.7)
42	10-1/2"	14 (6.4)
42	10-1/2"	16 (7.3)
46	16-1/2"	22.8 (10.4)
46	16-1/2"	24.3 (11)
68	16-1/2"	39.7 (18)
68	16-1/2"	38 (17.2)
81	16-1/2"	61 (27.7)

Force Req. to Lift Capacity (lb)	Length of Hand Chain Pulled to Lift Load 1 ft	Shipping Weight lb (kg) *
42	10-1/2"	15 (6.75)
46	16-1/4"	23 (10)
68	16-1/4"	36 (16)

* Shipping weights are approximate

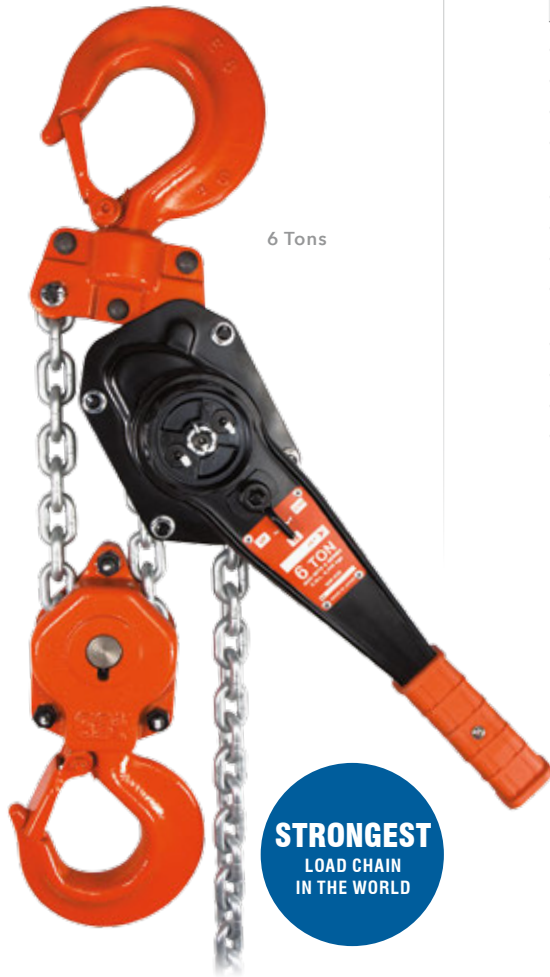




LEVER CHAIN PULLERS

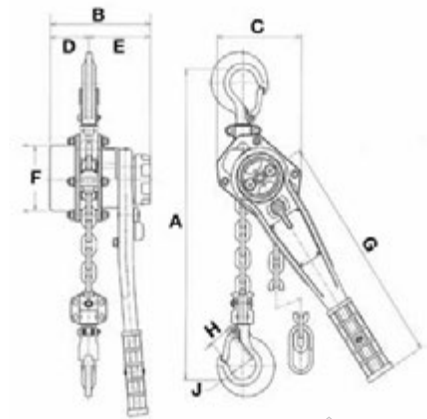
Mini-Mite II Series – Super Heavy Duty

- Exclusive grade 105 load chain is the world's strongest grade
- Allows use of smaller load chain without compromising safety
- Zinc coated load chain and coated brake hub minimize corrosion
- One simple lever changes direction and disengages gear train for fast chain adjustments
- New larger hooks with extra heavy duty latches
- Riveted rubber handle for comfort and safety
- Electrostatic powder painted before assembly to protect against rust
- Capacity unaffected at temperatures up to -40°C with suitable winter lubrication
- Tested to 150% of rated capacity
- Meets ANSI B30.21 specifications (certificate included)
- Made in Japan
- **Note: Custom lifts are available in any length desired**



6 Tons

STRONGEST
LOAD CHAIN
IN THE WORLD



Rated Lifting Capacity (Tons)	A	B	C	D	E	F	G	H	J
1/4	9-1/4"	3-5/8"	2-1/4"	7/8"	2-3/4"	3-1/4"	6-1/8"	15-16"	3/4"
1/2	10-7/16"	4-5/16"	3"	1"	3-1/4"	4-7/16"	11-3/16"	1-3/16"	3/4"
3/4	11-7/16"	5-5/8"	4-13/16"	2-1/16"	3-9/16"	4-11/32"	10-1/2"	29/32"	1-13/32"
1-1/2	13-7/8"	6-3/8"	5-5/16"	2-1/2"	3-7/8"	4-1/2"	12-3/16"	1-9/64"	1-11/16"
3	16-3/16"	7-11/32"	7-3/32"	3-1/4"	4-3/32"	6-5/8"	14-3/16"	1-13/32"	2-5/64"
6	22-13/64"	7-11/32"	9-1/4"	3-1/4"	4-3/32"	6-5/8"	14-3/16"	1-27/32"	2-3/4"

PROD. NO.	MOD. NO.	Rated Lifting Capacity (Tons)	Standard Lift	Number of Falls	Load Chain Diameter
110903	MM-25	1/4	3'3"	1	4.2mm
110904	MM-50	1/2	5'	1	5.0mm
110506	MM80-5	3/4	5'	1	5.6mm
110507	MM80-10	3/4	10'	1	5.6mm
110509	MM160-5	1-1/2	5'	1	7.1mm
110510	MM160-10	1-1/2	10'	1	7.1mm
110512	MM320	3	5'	1	9.0mm
110513	MM320	3	10'	1	9.0mm
110515	MM630	6	5'	2	9.0mm



1/4 Ton

1/2 Ton

1-1/2 Tons

3 Tons

Min Distance Between Hooks	Distance per Handle Pull	Force Req. to Lift Capacity (lb)	Lever Length	Shipping Weight lb (kg)*
9-1/4"	2"	61	6-1/8"	4.8 (2.2)
10-1/4"	1-3/64"	75	11-1/4"	9 (4.1)
11-7/16"	1-3/16"	66	10-1/2"	15.2 (6.9)
11-7/16"	1-3/16"	66	10-1/2"	16.8 (7.6)
13-7/8"	1"	66	12-3/16"	22.4 (10.2)
13-7/8"	1"	66	12-3/16"	26.1 (11.9)
16-3/16"	1/2"	82	14-3/16"	36.9 (16.8)
16-3/16"	1/2"	82	14-3/16"	38 (17.2)
22-13/64"	3/8"	84	14-3/16"	64.5 (29.3)

* Shipping weights are approximate



LEVER CHAIN PULLERS

#10-2 Series – Super Heavy Duty

- The toughest lever chain hoist made
- High tensile strength cast steel housing protects gears from impact damage
- Cast steel handle provides maximum strength and leverage
- Simple design makes routine inspection or maintenance fast and easy
- Non-asbestos brake discs use a high quality low abrasion aramid fibre material for a safer and healthier environment
- Easy free wheeling system automatically returns to hoisting mode when load is applied
- High grade low-wear chain is strong and smooth finished to prevent snagging or jamming
- Gauge included to check for chain elongation and hook stretch
- Top and bottom safety hooks are standard, and are designed to bend slowly to warn of overloads
- Each unit is tested to 150 % of rated capacity
- Meets ANSI B30.21 Standards (Certificate included)
- Made in Japan
- **NOTE: Custom Lifts are available in any length desired**



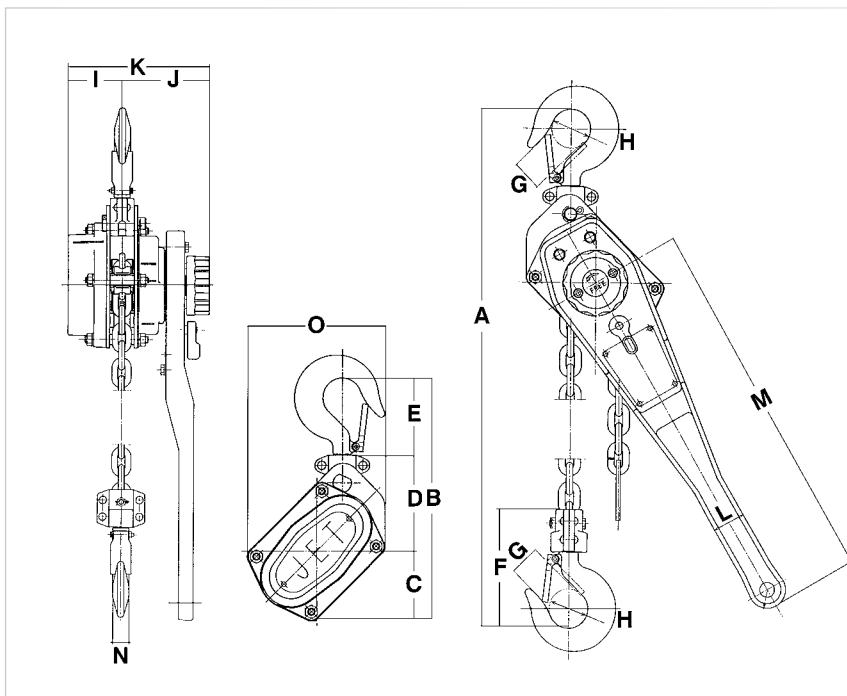
PROD. NO.	MOD. NO.	A	B	C	D
110241	#10-2	12-3/8"	8-9/16"	2-15/32"	3-1/2"
110242	#10-2	14-15/16"	10-21/64"	2-61/64"	4-3/32"
110243	#10-2	18-7/8"	12-3/4"	3-11/16"	5-3/16"
110244	#10-2	23-7/8"	15-3/32"	3-11/16"	6-15/32"

PROD. NO.	MOD. NO.	Rated Lifting Capacity (Tons)	Standard Lift	Number of Falls
110241	#10-2	3/4	5'	1
110242	#10-2	1-1/2	5'	1
110243	#10-2	3	5'	1
110244	#10-2	6	5'	2

Articulating top hook ensures proper positioning

Top and bottom hooks swivel 360° reducing load spin





E	F	G	H	I	J	K	L	M	N	O
2-19/32"	3-63/64"	61/64"	1-3/8"	2-3/16"	4-15/64"	6-27/64"	1-3/16"	10-1/2"	37/64"	4-59/64"
3-17/64"	5-3/64"	1-19/64"	1-21/32"	2-41/64"	4-7/32"	6-27/32"	1-3/8"	16-1/16"	25/32"	5-29/32"
3-7/8"	6-5/16"	1-19/32"	1-31/32"	3-17/32"	4-1/2"	8-1/32"	1-3/8"	16-1/16"	1"	7-3/8"
4-15/16"	10-21/32"	1-27/32"	2-17/32"	3-17/32"	4-1/2"	8-1/32"	1-3/8"	16-1/16"	1-3/8"	10-21/32"

Load Chain Diameter	Min Distance Between Hooks	Distance per Handle Pull	Force Req. to Lift Capacity (lb)	Lever Length	Shipping Weight lb (kg) *
5.6mm	12-3/8"	1-1/16"	66	10-1/2"	22.3 (10.1)
7.1mm	14-15/16"	1-1/8"	66	16-1/16"	28 (12.7)
9.0mm	18-7/8"	3/4"	84	16-1/16"	44 (20)
9.0mm	23-7/8"	3/8"	84	16-1/16"	74.6 (34)

* Shipping weights are approximate

Special design ensures chain pin is protected for safety and longer life



Offset handle protects operator





WIRE ROPE PULLERS

SGP Series – Heavy Duty

- Compact high strength steel housing
- Light weight, simple and safe to operate
- May be used in any position to lift, pull, lower, or stretch heavy loads
- The rope clamp system is easily disengaged with a lever, allowing smooth installation of the wire rope
- Overload protection is built-in with a shear pin in the forward lever, which will break when overloaded. The broken pins can be replaced without removing the load and spare shear pins are conveniently located in the rubber sleeve of the telescopic handle for SGP-75A and in the carrying handle for the SGP-150A and SGP-300A
- The design enables wire rope to be fed through 2 sets of wear resistant interlocking jaws by a single operating lever
- The SGP Wire Rope Pulling Hoist has a parallel clamping system, which has a large surface contact area, providing an evenly distributed grip at a lower force that results in less rope wear and maximum safety. The system offers a longer rope advance and requires less handle pulling effort, thus increasing operator efficiency
- All SGP Wire Rope Pulling Hoists are tested and have individual serial numbers for easy traceability to a test certificate (included)
- Uses standard ASA and IWRC wire rope (not included)

PROD. NO.	MOD. NO.	Rated Lifting Capacity (Tons)	Rated Lifting Capacity (lb)	Rated Pulling Capacity (Tons)	Rated Pulling Capacity (lb)	Dimensions L x W x H	Standard Wire Rope Diameter	Operating Rope Advance	Effort at Rated Load (lb)	Telescopic Handle Length	Shipping Weight lb (kg) *
111136	SGP-75A	3/4	1,760	1.4	2,860	16-3/4" x 2-1/2" x 9"	5/16"	2.36"	64	29"	39.7 (18)
111137	SGP-150A	1-1/2	3,520	2.8	5,720	21-1/2" x 3-3/4" x 10-1/4"	7/16"	2.36"	93	44"	45.2 (20.5)
111138	SGP-300A	3	7,040	5.7	11,440	26" x 4-1/2" x 12-1/2"	5/8"	1.57"	99	44"	71.6 (32.5)



Unique reusable reel allows safe, convenient storage of wire rope



Cable Assemblies for Wire Rope Pullers

- Wire rope for JET / SGP Series grip pullers with safety hook included
- Galvanized for longer life
- Includes reel

PROD. NO.	MOD. NO.	Wire Size	Wire Rope Length	To Fit Product No.	Shipping Weight lb (kg) *
111152	SGP-75A	5/16"	66'	11136	6.6 (3)
111153	SGP-150A	7/16"	66'	11137	27.7 (12.6)
111154	SGP-300A	5/8"	66'	11138	54.7 (24.8)
111162	SGP-75A	5/16"	100'	11136	25.5 (11.6)
111163	SGP-150A	7/16"	100'	11137	28.3 (12.9)

* Shipping weights are approximate

HAND CABLE PULLERS

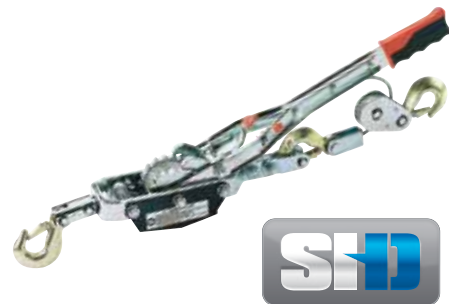


- One piece heavy duty frame is zinc plated and polished to resist corrosion
- Hook swivel block attached to double reinforced yoke for maximum strength
- Top hook bracket drop forged for maximum strength
- Drop forged steel hooks complete with safety latches
- Automatic safety system allows load to be released one notch at a time
- Heavy duty steel safety shield



JCPP Series – Heavy Duty 111225 / JCPP-200

- Heavy duty solid steel ratchet pawl and holding dog
- 14" heavy duty polished ratchet arm with ergonomic grip for operator comfort and ease of use
- Heavy duty aircraft cable, 12' length, 3/16" diameter
- Pulling capacity 2 tons, lifting capacity 1 ton



JCPP Series – Super Heavy Duty 111228 / JCPP-400

- Two heavy duty solid steel ratchet pawls for maximum strength and safety
- 18" heavy duty polished ratchet arm with ergonomic grip for operator comfort and ease of use
- Heavy duty aircraft cable, 10' length, 1/4" diameter
- Pulling capacity 4 tons, lifting capacity 2 tons

PROD. NO.	MOD. NO.	Rated Pulling Capacity (Tons)	Rated Lifting Capacity (Tons)	Number of Pawls	Number of Hooks	Maximum Cable Length	Shipping Weight lb (kg) *
111225	JCPP-200	2	1	1	2	5' @ 2 tons	8.8 (4)
111228	JCPP-400D	4	2	2	3	10' @ 2 tons, 5' @ 4 tons	16.5 (7.5)

Double reinforced yoke for strength and safety

Drop forged and plated hanging bracket swivel for strength and safety

Solid steel ratchet wheel and holding pawl

Drop forged steel hook complete with safety latch

Ergonomic handle



Recreational



Emergency



Industrial



Fencing



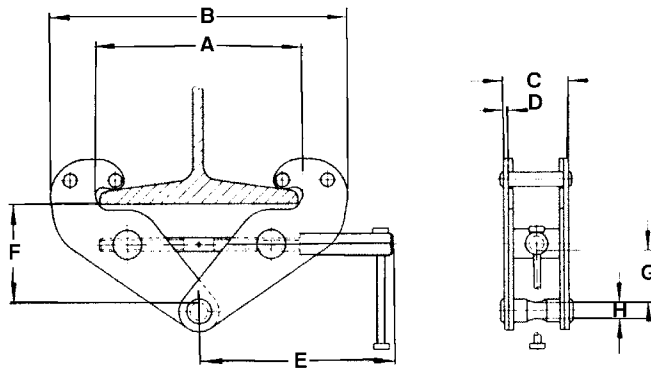
* Shipping weights are approximate

TROLLEYS AND CLAMPS



JBC Series – Heavy Duty

- Can be used for suspending loads or inverted as a clamp for vertical lifting of flanged beams
- Jaw design reduces stress on beam flanges by distributing load away from edges
- Equal width jaws assure best possible stability
- Threaded handle allows for ease of installation and portability
- Special locking screw mechanism ensures the unit stays tight, increasing safety
- Can be adjusted to fit securely on a wide range of flange and beam widths
- Built-in suspension bar provides ultra low headroom
- Meets ANSI B30.11 and B30.20 specifications (certificate included)
- Tested to 150% of rated capacity
- Maximum angle from vertical 15° when used for lifting beams



Locking screw prevents accidental loosening of clamp jaws

PROD. NO.	MOD. NO.	Maximum A	Minimum B	Maximum B	C	D	E	Maximum F	Minimum F	Minimum G	H
120603	JBC-1	9.65"	7.48"	14.17"	2.76"	.20"	8.46"	5.31"	3.07"	1.10"	.80"
120605	JBC-2	9.65"	7.48"	14.17"	2.91"	.28"	8.46"	5.31"	3.07"	1.10"	.80"
120606	JBC-3	11.22"	9.84"	17.52"	4.65"	.31"	10.24"	6.30"	4.33"	2.17"	.87"
120607	JBC-5	12.60"	10.43"	19.09"	5.51"	.39"	10.63"	6.50"	4.92"	2.05"	1.10"

PROD. NO.	MOD. NO.	Capacity (Tons)	Rated Capacity (lb)	Rated Flange Width	Shipping Weight lb (kg) *
120603	JBC-1	1	2,000	2.95" - 9.05"	13 (5.9)
120605	JBC-2	2	4,000	2.95" - 9.05"	15.2 (7)
120606	JBC-3	3	6,000	3.35" - 11"	28.8 (13.1)
120607	JBC-5	5	10,000	3.5" - 12"	38 (17.3)

* Shipping weights are approximate



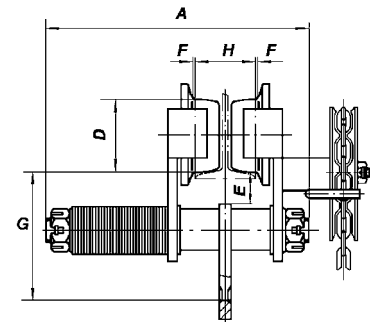
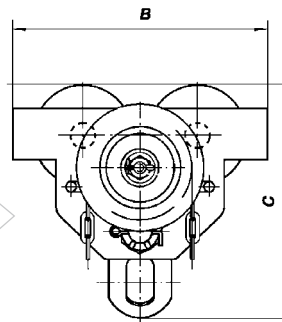
MANUAL TROLLEYS

SGT Series Geared – Heavy Duty

- Geared wheels driven by hand chain for precise load control
- 10' hand chain drop
- Double sealed ball bearings for long life
- Specially hardened steel wheels meet ANSI B30.11 specifications (certificate included)
- Specially designed integrated drop stops/bumpers take the load in the event of wheel failure and prevent wheels from contacting other trolleys on the track
- Adjustable to fit various sizes of flanges and beams
- Comes equipped for use on up to 8" beam widths
- Can be installed or removed at any point along the track
- Use on straight or curved H, I, W and S-beams



A	B	C	D	E	F	G
13-1/8"	10-1/4"	9-3/8"	2-15/16"	1-1/4"	1/8"	5-13/64"
13-29/32"	11-7/8"	10-15/16"	3-1/2"	1-1/16"	1/8"	6-1/16"
14-5/8"	13-1/2"	13-15/16"	4-5/16"	13/16"	1/8"	7-21/32"
15-15/32"	15-3/8"	15-29/32"	4-3/4"	13/16"	1/8"	8-3/4"
17-11/64"	18-1/2"	19-5/8"	5-29/32"	1-3/4"	1/8"	11"



PROD. NO.	Rated Capacity (Tons)	Rated Capacity (lb)	I-Beam Flange Width (H)	Min. Radius Curve	Diameter Length of Chain	Shipping Weight lb (kg) *
120362	1	2,200	4" - 8-1/32"	40"	3/16" x 10'	43.7 (19.8)
120364	2	4,400	4" - 8-1/32"	43"	3/16" x 10'	66 (30)
120365	3	6,600	4" - 8-1/32"	51"	3/16" x 10'	109.2 (49.7)
120366	5	11,000	4-1/2" - 8-1/32"	55"	3/16" x 10'	140.8 (64)
120367	10	22,000	4-15/16" - 8-1/32"	67"	3/16" x 10'	253.4 (115.2)

* Shipping weights are approximate

SBT Series – Heavy Duty

- Load is moved by pulling on hoist load chain in direction of travel
- Double sealed ball bearings for long life
- Specially hardened steel wheels meet ANSI B30.11 specifications (certificate included)
- Specially designed integrated drop stops/bumpers take the load in the event of wheel failure and prevent wheels from contacting other trolleys on the track
- Adjustable to fit various sizes of flanges and beams
- Comes equipped for use on up to 8" beam widths
- Can be installed or removed at any point along the track
- Use on straight or curved H, I, W and S-beams

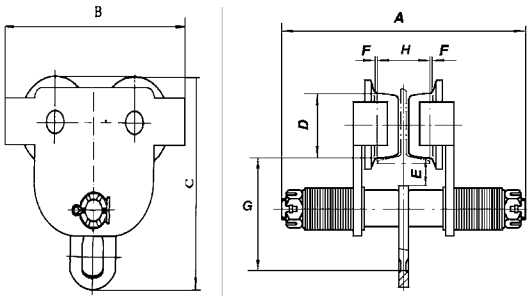


Hardened steel wheels meet ANSI B30.11 standards

8" capacity bolts for use on wider beams



Extension kits available
See below



Rated Capacity (Tons)	A	B	C	D	E	F	G
1/2	12-13/32"	8-1/2"	8-1/8"	2-1/4"	1-1/4"	1/8"	4-41/64"
1	13-1/8"	10-1/4"	9-3/8"	2-15/16"	1-1/4"	1/8"	5-13/64"
1-1/2	13-15/16"	10-3/4"	10"	3-3/8"	1-1/8"	1/8"	5-1/4"
2	13-29/32"	11-7/8"	10-15/16"	3-1/2"	1-1/8"	1/8"	6-1/16"
3	14-5/8"	13-1/2"	13-15/16"	4-5/16"	13/16"	1/8"	7-21/32"
5	15-15/32"	15-3/8"	15-29/32"	4-3/4"	13/16"	1/8"	8-3/4"
10	17-11/64"	18-1/2"	19-5/8"	5-29/32"	1-1/4"	1/8"	11"

PROD. NO.	Rated Capacity (Tons)	Rated Capacity (lb)	I-Beam Flange Width (H)	Minimum Radius Curve	Shipping Weight lb (kg) *
120251	1/2	1,100	3-1/4" - 8-1/32"	36"	20.7 (9.4)
120252	1	2,200	4" - 8-1/32"	40"	34.2 (15.6)
120253	1-1/2	3,300	4" - 8-1/32"	40"	43.3 (19.7)
120254	2	4,400	4" - 8-1/32"	43"	56.5 (25.7)
120255	3	6,600	4" - 8-1/32"	51"	90.5 (41.1)
120256	5	11,000	4-1/2" - 8-1/32"	55"	124.9 (56.8)
120257	10	22,000	4-15/16" - 8-1/32"	67"	233.6 (106.1)

Extension Shaft Kits

- Converts trolleys for use on beams with flange widths from 8" to 12"
- Includes suspension shaft, washers, castle nuts and split pins
- Fits SBT and SGT series trolleys



Extra heavy duty side plates ensure strongest beam clamps available!

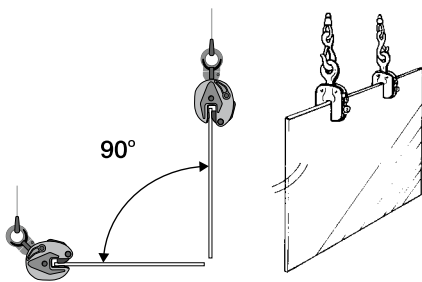
PROD. NO.	MOD. NO.	Description	PROD. NO.	MOD. NO.	Description
124202	JTES-0512	1/2 ton trolleys	124206	JTES-3012	3 ton trolleys
124203	JTES-1012	1 ton trolleys	124207	JTES-5012	5 ton trolleys
124204	JTES-1512	1.5 ton trolleys	124208	JTES-10012	10 ton trolleys
124205	JTES-2012	2 ton trolleys			

* Shipping weights are approximate



PLATE CLAMPS

- Heavy duty industrial plate clamps safely lift various sizes and weights of steel plates
- A must for all steel fabrication plants
- All units complete with safety lock
- Specially hardened jaw for long life and safe gripping power
- Suitable for plates of 400 Vickers (HRC-41) Max
- Meets ANSI B30.20 specifications (certificate included)
- Tested to 200% of rated capacity



SPC Series Vertical – Heavy Duty

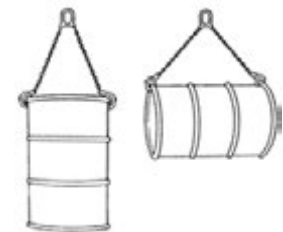
- Vertical type for straight line lifting of vertically stored steel plates

PROD. NO.	MOD. NO.	Rated Lifting Capacity (Tons)	Jaw Opening	Suspension Eye Opening	Min Plate Thickness (in/mm)	Shipping Weight lb (kg) *
109302	SPC-100	1	0 - 7/8"	2"	7/32" (5.5)	7.7 (3.5)
109304	SPC-200	2	0 - 1-3/16"	2-1/4"	19/64" (7.5)	13.2 (6)
109305	SPC-300	3	0 - 1-3/8"	2-3/8"	11/32" (8.8)	23.1 (10.5)

SPCU Series Universal Style – Heavy Duty

- Universal type suitable for lifting horizontally stored plates into vertical position
- Can be used to flip plates over provided adequate ground clearance is allowed for safety lock lever to operate

PROD. NO.	MOD. NO.	Rated Lifting Capacity (Tons)	Jaw Opening	Suspension Eye Opening	Min Plate Thickness (in/mm)	Shipping Weight lb (kg) *
109322	SPCU-50	1/2	0 - 19/32"	1-1/8"	5/32" (3.8)	5.5 (2.5)
109323	SPCU-100	1	0 - 13/16"	1-7/8"	13/64" (5.0)	11.0 (5)
109325	SPCU-200	2	0 - 1"	2-1/4"	1/4" (6.3)	16.5 (7.5)
109327	SPCU-300	3	0 - 1-3/16"	3"	19/64" (7.5)	34.1 (15.5)



DRUM LIFTER

SDL Series Drum Lifter

- Designed to lift steel drums with or without lids
- Clamp uses drum edge for lifting
- Compact and lightweight
- All steel construction
- 6mm Grade 80 galvanized alloy chain
- 6:1 safety factor
- Chain length 19"

PROD. NO.	MOD. NO.	Rated Lifting Capacity (Tons)	Shipping Weight lb (kg) *
109392	SDL-100	1	7.7 (3.5)

* Shipping weights are approximate

YARDING BLOCKS



- Strong, all steel construction
- Ball bearing, high carbon steel sheave
- Quick release yoke swings open to accept rope
- Zerk type grease fitting on all sizes
- Tested to 150% of rated capacity

Single Sheave Yarding Blocks

PROD. NO.	Size	Rated Capacity (Tons)	Rope Diameter	Shipping Weight lb (kg) *
131104	4"	1	3/8"	4.4 (2)
131105	5"	1-1/2	1/2"	6.6 (3)
131106	6"	2	9/16"	11 (5)
131108	8"	4	5/8"	28.6 (13)



SNATCH BLOCKS

- Cast iron sheaves
- Powder metallurgy bushings for improved oil retention
- Hook complete with safety latch
- Side plate swings open to accept rope
- Ball type oiler on 3", 4" and 5"
- Zerk type grease fitting on 6," 8" and 10"
- Available with single or double sheave
- Tested to 150% of rated capacity

Single Sheave Snatch Blocks

PROD. NO.	Size	Rated Capacity (Tons)	Rope Diameter	Shipping Weight lb (kg) *
130103	3"	1/2	3/8"	3.4 (1.6)
130104	4"	1	7/16"	5.9 (2.7)
130105	5"	1-1/2	1/2"	10.2 (4.6)
130106	6"	2	5/8"	17.2 (7.8)
130108	8"	4	3/4"	43.5 (19.8)

Double Sheave Snatch Blocks

PROD. NO.	Size	Rated Capacity (Tons)	Rope Diameter	Shipping Weight lb (kg) *
130203	3"	1/2	3/8"	5.6 (2.5)
130204	4"	1	7/16"	9.3 (4.2)



Single Sheave

Double Sheave

SHEAVES

Single Sheaves

PROD. NO.	Size	Bore Size	Rope Diameter	Rated Capacity (Tons)	Width	Shipping Weight lb (kg) *
133103	3"	1/2"	5/16"	1/2	3/4"	1 (0.4)
133104	4"	5/8"	3/8"	1	15/16"	1.9 (0.9)
133105	5"	3/4"	1/2"	1-1/2	1-1/16"	3.6 (1.6)
133106	6"	1-1/8"	5/8"	2	1-5/16"	5.9 (2.7)
133108	8"	1-1/4"	7/8"	4	1-7/8"	14.7 (6.7)



- Cast iron
- Bronze bushings
- Ball type oiler
- Tested to 150% of rated capacity
- Not a replacement for snatch block or yarding block sheaves

* Shipping weights are approximate

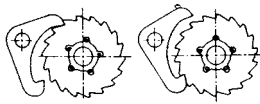


HAND WINCHES

IWF Series - Super Heavy Duty



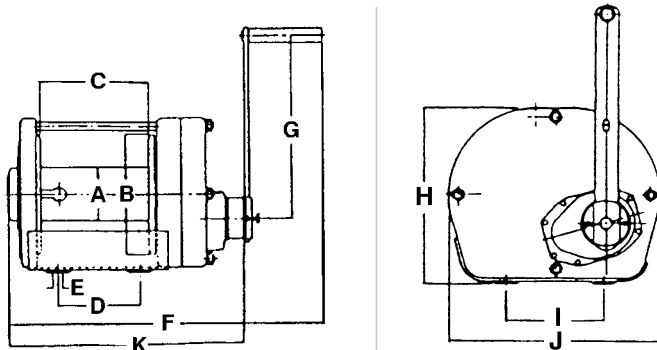
113263



Double Brake Pawl



- Chain hoist type dual pawl Weston brake for ultimate load control
- All braking components are plated with a rust resistant finish
- Non-asbestos brake discs use high quality low abrasion aramid fibre material for a safer and healthier environment
- Free wheeling feature enables the operator to pay out cable fast
- Will not free wheel under load
- Dust and weather-tight housing using an ABS plastic cover to seal out dust and rain
- Handle grip is designed to allow maximum comfort during winding
- Handle length is easily adjustable



PROD. NO.	MOD. NO.	A	B	C	D	E	F	G	H	I	J	K
113261	IWF-100N	1-7/8"	4-1/32"	4-11/16"	3-1/4"	7/16"	15-15/16"	9-13/16"	5-51/64"	3-35/64"	6-19/64"	9-5/8"
113263	IWF-500N	2-3/4"	5-33/64"	5-29/32"	3-15/16"	19/32"	19-13/64"	13-3/4"	7-11/64"	5-1/8"	9-31/32"	12-15/16"
113264	IWF-1000N	3-1/2"	6-57/64"	6-7/64"	4-21/64"	45/64"	20-53/64"	13-3/4"	8-7/16"	6-45/64"	10-31/64"	14-9/16"

PROD. NO.	MOD. NO.	Rated Lifting Capacity (lb)	Drum Capacity	Cable Length Pulled Per Turn	Force Req. to Lift Capacity (lb)	Handle Length	Gear Ratio	Shipping Weight lb (kg) *
113261	IWF-100N	220	5/32" x 131'	6-1/2"	26	9-13/16"	1:1	31.9 (14.5)
113263	IWF-500N	882	1/4" x 98'	2-3/16"	25	13-3/4"	4.33:1	39.6 (18)
113264	IWF-1000N	1,653	5/16" x 98'	1"	22	13-3/4"	12.2:1	99 (45)

* Shipping weights are approximate

PT Series – Heavy Duty

- High quality 5,500 lb capacity
- High tensile steel frame and one piece "C" section forks with welded reinforcement for superior strength
- 3 position control lever automatically returns to neutral position
- Handle operates from rear and sides and returns to upright position when released
- Ergonomic handle grip for operator comfort and positive control
- Entry rollers in front of load rollers allow easy entry and exit from pallets
- Totally sealed hydraulic pump for reliable leak-free operation
- Built-in overload protection and top of stroke bypass valve prevents damage
- Slow lowering hand control valve for optimum control
- Large diameter polyurethane coated steel steer wheels and polyurethane load rollers for maximum manoeuvrability and smooth transport of heavy loads
- Steering column swivels 202°
- Fully adjustable push rods for fork height adjustment
- 27" x 48" forks are extra wide for maximum strength
- Grease fittings at all key points



PROD. NO.	MOD. NO.	Rated Lifting Capacity (lb)	Skid Quantity	W1	W2	L1	L2	H1	H2	A	B	Shipping Weight lb (kg) *
190918	PT-5500	5,500	6	27"	7"	48"	61-1/2"	7-1/4"	2-31/32"	7-7/8" x 2-1/2"	2-29/32" x 3-55/64"	213 (96)



Totally sealed H.D. hydraulic unit steel wheel wrapped in polyurethane



Three position control lever for operator convenience



Heavy duty single front wheel with entry, exit roller wheel



Fully adjustable push rods

SCISSOR LIFT HAND CART

SLC Series – Heavy Duty

- Hydraulic table designed for lifting and lowering
- Foot pedal for easy table lifting
- Wire control for convenient operation is superior to knob control
- Large table size
- Wheel stops for positioning cart
- Polyurethane casters for smooth travel
- Industrial quality



PROD. NO.	MOD. NO.	Rated Lifting Capacity (lb)	Minimum Table Height	Maximum Table Height	Handle Height	Table Dimensions	Wheel Diameter	Foot Pedal Cycles to Max. Height
190968	SLC-1100	1,100	11-1/2"	35-3/4"	38-7/8"	33-1/2 x 19-3/4"	5"	27

* Shipping weights are approximate

WARRANTY

WARRANTY POLICY

JET EQUIPMENT & TOOLS LTD. (JET),

makes every effort to ensure its products are manufactured to the highest standards and are guaranteed against defects in materials and workmanship when the product is used for the purpose for which it was designed.

This guarantee applies only to JET products purchased new from a JET authorized distributor.

JET product warranties are extended to the original retail purchaser only.

This warranty does not apply to any product showing signs of abuse, misuse, alteration, or having been improperly maintained or repaired.

This warranty does not cover damage attributable to normal wear and tear.

Any JET product that fails during normal use and is within the specified warranty period for that product will be repaired or replaced at JET'S discretion. Repairs and/or replacements are warranted as described for the specific product and only for the remainder of the original warranty period.

Repair or replacement is the exclusive remedy for defective product under this warranty.

Warranty is expressly in lieu of all other warranties, including the implied warranty of merchantability or any implied warranty of fitness for a particular application.

Any JET product for which there is a warranty claim should be returned PREPAID to an authorized JET distributor or service center. Authorized Warranty Depots are found at www.surewerx.com

ALL warranty claims must be accompanied by proof of purchase and an explanation of the defect or failure. It is the customer's responsibility to provide this information. JET shall not be held liable for any consequential or incidental damages for breach of any expressed or implied warranty on their products. No claims for damages of any type will be considered and all products are sold with this understanding.

Any costs incurred to obtain warranty consideration or services are the customer's responsibility including shipping and handling, travel, lost time, or lost production.

1 Year Limited Warranty

Chain Hoists	Hand Cable Pullers
Electric Hoists	Lever Chain Pullers
Drum Clamps	Grip Pullers
Plate Clamps	Manual Adjustable Trolleys
Beam Clamps	Blocks and Sheaves
Pallet Trucks	Mobile Lift Tables
Winches	

General information on JET chain hoists and pullers

Customs Lifts - Custom lift lengths are available, however, custom lift hoists and pullers are NOT returnable.

CAUTION: Be sure that supporting structures and load-attaching devices used in conjunction with hoists, provide an adequate safety factor to handle the rated load plus the weight of the equipment. If in doubt, consult a qualified structural engineer.

This equipment is not to be used for lifting, supporting, or transporting people, or lifting, supporting, or transporting loads over people.

IMPORTANT: Before installation and operation, see maintenance and operations manual for additional warnings, precautions and operating instructions.

SAFETY GUIDE

DO

BEFORE INITIAL OPERATION OF HOIST:

1. Read and comply with all instructions and warnings furnished.
2. Check lubricant.
3. Check operation of brake.
4. Check that chain is properly seated in sheaves and that chain is not twisted, kinked, or damaged.

BEFORE EACH SHIFT:

1. Inspect hooks for nicks, gouges, cracks, and signs of pulling apart or twisting.
2. Inspect hook latch for proper operation.
3. Check chain for kinks or twists.
4. Check operation of brake.
5. Replace warning label if missing or illegible.

BEFORE OPERATING:

1. Be certain all personnel are clear of the load to be lifted and moved.
2. Make sure load will clear stock piles, machinery, or other obstructions when hoisting and traveling the load.
3. Eliminate any twists or kinks in the load chain.

DO NOT

1. Lift more than rated load.
2. Operate lever hoist when it is restricted from forming a straight line with the direction of loading.
3. Operate with twisted, kinked, or damaged chain.
4. Operate if chain is not seated in sheaves or sprockets.
5. Wrap chain around load or use chain as a sling.
6. Operate unless load is properly applied to the saddle or bowl of the hook.
7. Operate if load is applied to the tip of the hook.
8. Operate with damaged or missing hook latches.
9. Lift people or lift loads over people.
10. Operate with side-pulling or side-loading of load to lever hoist.
11. Operate a damaged or malfunctioning lever hoist.
12. Operate with other than hand power.
13. Remove, deface, or obscure warning label or labels on lever hoist.
14. Leave load suspended when lever hoist is unattended unless specific precautions have been instituted and are in place.
16. Lengthen load chain or repair damaged load chain by welding.
17. Use chain as a ground for welding.
18. Hammer on lever.
19. Use extensions on lever.
20. Lift one load with more than one lever hoist, unless each lever hoist is rated to support the entire load in the event one or more lever hoists is disabled, shifting load to the other lever hoists.