

INDUSTRIAL POWER EQUIPMENT

**SAFETY
AND
PRODUCTIVITY**

DESIGN

With features like heavy duty cages and noise reduction, our products are designed to keep you productive and safe

QUALITY

From piston rings to brass fittings to high grade rubber hoses, only the best materials are used in our products

STANDARDS

Our products are built to meet or exceed the toughest CSA standards so workers can trust they are safe and reliable

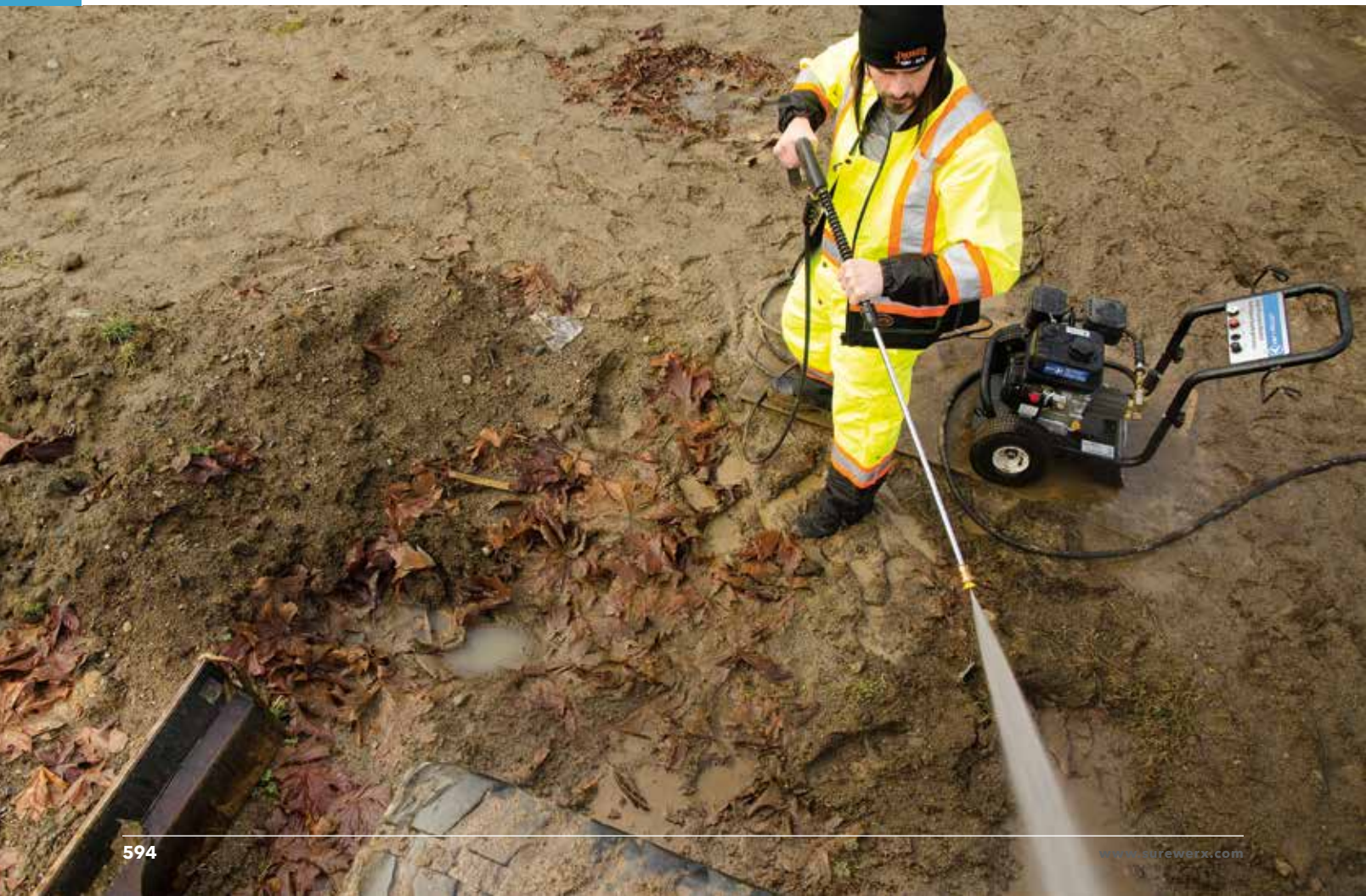
DID YOU KNOW?

JET provides comprehensive instructions on how best to use and maintain your equipment to ensure long life



TABLE OF CONTENTS

Generators	596
Generators.....	596-597
Pressure Washers	598
Pressure Washers.....	598-600
Pressure Washer Accessories.....	601-605
Pressure Washer Pumps.....	606
Water Pumps	607
Trash Pumps	608
Trash Pumps.....	608-609
Chemical Transfer Pumps	610
Hoses	611
Water/Trash Pump - Discharge Hoses.....	611
Water/Trash Pump - Suction Hose Kits.....	611
Submersible Pumps	612
Warranty Policy.....	613



JET PEAK PERFORMANCE ENGINES

WITH OVERHEAD VALVE DESIGN



OVERHEAD VALVE (OHV) ENGINES

Overhead Valve (OHV) engines are more efficient and burn cleaner than side-valve engines. Superior airflow and engine block design help the engine run cooler than other leading engines, ensuring maximum engine life.

Before each JET Premium Engine leaves the assembly line, it is tested under load and checked for power levels and governor response, to ensure consistent peak performance.

JET Premium Engines feature rugged construction for years of dependable performance.

PREMIUM OHV ENGINES
BUILT FOR MAXIMUM PERFORMANCE



Hardened Valve Guides
and die cast connecting rods for strength and optimum life



Automatic Compression Release
is easier to turn over, resulting in less wear on your starter and battery



Dual Crankshaft Bearings
provide less friction and longer life



Cast Iron Cylinder Liner
for longest life



Service Recoil
simplifies maintenance and repairs for less downtime!



Tripod Piston Ring
design for reduced oil consumption and maximum power



Overhead Valve Design
is more efficient and burns cleaner for peak performance



GENERATORS



NEW



3,500 Watt Electric Start Inverter

291109 / JIN3500E

- JET Inverter technology provides 3,500 watts of peak power
- Extremely quiet, lightweight and fuel-efficient power
- Operates a wide variety of appliances, making it perfect for portable use at home or while camping
- Can be combined with another JIN3500E with a parallel cord to double the power output
- Ideal for microwaves, coffee pots, televisions, computers, hair dryers and refrigerators
- 10 litre fuel tank runs the generator continuously for up to 15 hours @ 50% rated load
- 212 cc, 4-stroke engine runs on gasoline to provide dependable power
- Includes receptacles: 1 x 120V 20A Duplex, 1 x 120V 30A Twistlock and 12V DC 8.0A
- Auto idle down
- Includes wheels for easy mobility with a locking caster
- Compact size and weight make it easy to transport
- Parallel capability
- Digital display meter

3,100 Watt Generator

291101 / JGE3100

- Gasoline powered generator provides up to a max of 3,100 watts, 2,800 watts running, of electricity
- Powered by a 7 HP (212cc) JET engine with low oil alert
- Features 4 x 120V GFCI plugs, 1 x 120V Twist-Lock plug, and a 12V / 8amps DC receptacle ideal for charging car batteries
- (AVR) automatic voltage regulator
- Fuel gauge
- Circuit breakers
- Receptacles: 4 x 120V GFCI, 1 x 120V Twist-Lock, 12V DC

6,500 Watt Generator

291103 / JGE6500E

- Gasoline powered generator provides up to a max of 6,500 watts, 5,500 watts running of electricity
- Powered by a 13 HP (389cc) JET electric start engine with low oil alert
- Features 4 x 120V GFCI plugs, 1 x 120V Twist lock plug, 1 x 240V Twist-Lock plug, and a 12V / 8amps DC receptacle ideal for charging car batteries
- Automatic voltage regulator (AVR)
- Automatic idle down
- Includes: Handles, 8" wheel kit and battery
- Receptacles: 4 x 120V GFCI, 1 x 120V Twist-Lock, 1 x 240V Twist-Lock, 12V DC

PROD. NO.	291101	291103	291109
Generator	3,100 Watt	6,500 Watt	3,500
Engine	212 cc JET	389 cc JET	212 cc
Starter	Recoil	Electric	Electric
Shutdown	Low Oil	Low Oil	Low Oil
Regulator	Automatic Voltage Regulator (AVR)	Automatic Voltage Regulator (AVR)	
Maximum Watt Output	3,100	6,500	3,500
Running Watt Output	2,800	5,500	3,000
Noise Level @7m	70 dB	74 dB	
Fuel Tank Capacity	3.17 GAL (12 L)	6.6 GAL (25 L)	10 L
Run Time Per Tank	7 Hours @ Full Load	7 Hours @ Full Load	15 hours @ 50% rated load



9,000 Watt Generator 291105 / JGE9000E

- Gasoline powered generator provides up to a max of 9,000 watts, 7,100 watts running of electricity
- Powered by a 15 HP (420 cc) JET electric start engine with low oil alert
- Features 6 x 120V GFCI plugs, 1 x 120V Twist-Lock plug, 1 x 240V Twist-Lock plug, and a 12V / 8 amp DC receptacle ideal for charging car batteries
- Automatic voltage regulator (AVR)
- Fuel gauge
- Circuit breakers
- Automatic idle down
- Includes: Handles, 8" wheel kit, battery
- Receptacles:
 - 6 x 120V GFCI
 - 1 x 120V Twist-Lock
 - 1 x 240V Twist-Lock
 - 12V DC



6,800 Watt Generator 291107 / JGE6800GX

- Gasoline powered generator provides up to a max of 6,800 watts, 5,800 watts running, of electricity
- Powered by a Honda GX 390 (389 cc) electric start engine with low oil alert
- Features 2 x 120V Duplex plugs, 1 x 120V Twist-Lock plug, 1 x 240V Twist-Lock plug, and a 12V / 8amps DC receptacle ideal for charging car batteries
- Automatic voltage regulator (AVR)
- Digital multi-meter
- Fuel gauge
- Circuit breakers
- Automatic idle down
- Includes: Handles, 8" wheel kit and battery
- Receptacles:
 - 2 x 120V 20a duplex
 - 1 x 120V Twist-Lock
 - 1 x 240V Twist-Lock
 - 12V DC



PROD. NO.	291105	291107
Generator	9,000 Watt	6,800 Watt
Engine	420 cc JET	389 cc Honda GX390
Starter	Electric	Electric
Shutdown	Low Oil	Low Oil
Regulator	Automatic Voltage Regulator (AVR)	Automatic Voltage Regulator (AVR)
Maximum Watt Output	9,000	6,800
Running Watt Output	7,100	5,800
Noise Level @7m	74 dB	78 dB
Fuel Tank Capacity	6.6 GAL (25 l)	6.6 GAL (25 l)
Run Time per Tank	6.5 Hours @ Full Load	6.5 Hours @ Full Load



PRESSURE WASHERS



Axial Pump



Triplex Pump

3,100 PSI High Pressure Washer

291001 / JPW3100L

- Powered by a reliable 212 cc JET engine
- 3,100 PSI, 2.3 GPM
- Mounted on a rugged powder coated steel frame
- AR direct drive axial pump
- 2.3 gallons per minute cleans quickly and economically
- 25 feet of 1/4" high quality rubber high pressure hose
- Quick connect nozzles in 0°, 15°, 40°, and soap nozzle (**291410**)
- Convenient on-board spray tip storage
- 10" pneumatic tires reduce vibration and easily handle tough terrain

4,000 PSI High Pressure Washer

291005 / JPW4000L

- Powered by a reliable 420 cc JET engine
- 4,000 PSI, 4.0 GPM
- Mounted on a rugged powder coated steel frame
- Triplex plunger pump
- 4 gallons per minute cleans quickly and economically
- 50 feet of 3/8" rubber hose resists kinking
- Low pressure chemical injector
- Quick connect nozzles in 0°, 15°, 40°, and soap nozzle (**291409**)
- Convenient on-board spray tip storage
- Oversize pneumatic tires move easily over rugged terrain, help absorb vibration

PROD. NO.	291001	291005
Engine	JET	JET
HorsePower	212 cc	420cc
Pump	Axial	Triplex
Maximum Pressure	3,100 PSI	4,000 PSI
Maximum Flow	2.3 GPM	4.0 GPM
High Pressure Hose	25 ft	50 ft

Triplex Pump Features

Triplex series are designed for direct drive on gasoline engines ranging from 5-13 HP. Intended use for medium to heavy tasks; this triplex plunger pump features the latest in design and technology. Life tested over 500 hours at maximum performance of 4 GPM at 4,000 PSI. The triplex series features a compact and efficient intergrated unloader valve and fixed chemical injector.

POWERED by
HONDA™

2,700 PSI High Pressure Washer

291007 / JPW2700GC

- Powered by 160 cc Honda GC160 engine
- 2,700 PSI, 2.3 GPM
- Mounted on a rugged powder coated steel frame
- AR direct drive axial pump
- 2.3 gallons per minute cleans quickly and economically
- 25 feet of 1/4" high quality rubber high pressure hose
- Quick connect nozzles in 0°, 15°, 40°, and soap nozzle (**291410**)
- Convenient on-board spray tip storage
- 10" pneumatic tires reduce vibration and easily handle tough terrain



Axial Pump

3,000 PSI High Pressure Washer

291009 / JPW3000GX

- Powered by 196cc Honda GX200 engine
- 3,000 PSI, 2.3 GPM
- Mounted on a rugged powder coated steel frame
- AR direct drive axial pump
- 2.3 gallons per minute cleans quickly and economically
- 25 feet of 1/4" high quality rubber high pressure hose
- Quick connect nozzles in 0°, 15°, 40°, and soap nozzle (**291410**)
- Convenient on-board spray tip storage
- 10" pneumatic tires reduce vibration and easily handle tough terrain



Axial Pump

PROD. NO.	291007	291009
Engine	Honda GC160	Honda GX200
HorsePower	160 cc	196 cc
Pump	Axial	Axial
Maximum Pressure	2,700 PSI	3,000 PSI
Maximum Flow	2.3 GPM	2.3 GPM
High Pressure Hose	25 ft	25 ft

Axial Pump Features

Plungers: Hardened stainless steel

Valves: Stainless steel poppet, seat and cage, stainless steel spring

Seals: Buna-N dual seals

Bearings: Premium oversized ball and needle bearings

Crankshaft: Precision die-cast, with cooling fins for maximum heat dissipation.

The housing retains the crankshaft bearing, oil seal and rear wobble plate bearing support washer.



PRESSURE WASHERS

POWERED by
HONDA™



Triplex Pump



Triplex Pump

3,100 PSI High Pressure Washer

291008 / JPW3100GX

- Powered by 196 cc Honda GX200 engine
- 3,100 PSI, 3.0 GPM
- Mounted on a rugged powder coated steel frame
- Triplex plunger pump
- 3 gallons per minute cleans quickly and economically
- 25 feet of 1/4" high quality rubber high pressure hose
- Quick connect nozzles in 0°, 15°, 40°, and soap nozzle (**291410**)
- Convenient on-board spray tip storage
- 10" pneumatic tires reduce vibration and easily handle tough terrain

4,000 PSI High Pressure Washer

291011 / JPW4000GX

- Powered by a reliable 389 cc HONDA GX390 engine
- 4,000 PSI, 4.0 GPM
- Mounted on a rugged powder coated steel frame
- Triplex plunger pump
- 4 gallons per minute cleans quickly and economically
- 50 feet of 3/8" rubber hose resists kinking
- Low pressure chemical injector
- Quick connect nozzles in 0°, 15°, 40°, and soap nozzle (**291410**)
- Convenient on-board spray tip storage
- Oversize pneumatic tires move easily over rugged terrain and help absorb vibration

PROD. NO.	291008	291011
Engine	Honda GX200	Honda GX390
HorsePower	196 cc	389 cc
Pump	Triplex	Triplex
Maximum Pressure	3,100 PSI	4,000 PSI
Maximum Flow	3.0 GPM	4.0 GPM
High Pressure Hose	25 ft	50 ft

25' High Pressure Rubber Hose

291412 / PWRH14

- 4,000 PSI
- 1/4" rubber hose
- 25 foot
- Single wire braid wrapped cover
- 3/8" quick connect brass coupler, steel plug
- Maximum temperature: 212°F



50' High Pressure Rubber Hose

291413 / PWRH38

- 4,000 PSI
- 3/8" rubber hose
- 50 foot
- Single wire braid wrapped cover
- 3/8" quick connect brass coupler, steel plug
- Maximum temperature: 310°F



4,000 PSI Pressure Washer Gun and Wand Assembly

291405 / PWGW4

- 36" spray gun and wand
- Maximum pressure: 4,000 PSI
- Comes with quick disconnect coupler
- Insulated grip fights fatigue
- For use with premium and commercial grade pressure washers
- Standard replacement assembly for all JET branded units



3,400 PSI Pressure Washer Gun and Wand Assembly

291406 / PWGW3

- 36" spray gun and wand
- Maximum pressure: 3,400 PSI
- Front load 3/8" FNPT inlet
- Outlet 1/4" quick connect
- Comfort grip handle
- Nozzle holder lance
- Optional Accessories: Side handle (PBE-85202057)



1/4" MNPT Thermal Relief Valve

291415 / PWTV14

- Maximum Pressure: 200 PSI
- Maximum Temperature: 145°F
- Inlet: 1/4" MNPT
- The thermal relief valve keeps pressure cleaner pumps operating in a safe range to prevent overheating (caused by recirculating water). At water temperatures above 145° F, packing seals may fail. The pump then overheats. When the system is in bypass mode, the thermal relief valve opens to release hot water. Cold water can then enter the pump so it continues to operate at a safe temperature. Should the pump overheat, thermal relief valves must be replaced





PRESSURE WASHER ACCESSORIES

Pressure Washer Nozzle Kit Quick Connect Spray Tips # .030

291410 / PWNS30

- 1/4" quick connect spray nozzle
- 4 pack nozzle set # .030
- 0° (red), 15° (yellow), 40° (white) and soap nozzle (black)

Pressure Washer Nozzle Kit Quick Connect Spray Tips # .035

291411 / PWNS35

- 1/4" quick connect spray nozzle
- 4 pack nozzle set # .035
- 0° (red), 15° (yellow), 40° (white) and soap nozzle (black)

5,000 PSI Rotary Nozzle

291409 / PWRNWF

- This rotary nozzle cleans faster than a regular nozzle. It is great for stripping paint or cleaning concrete surfaces
- Includes a 5,000 PSI rated inline filter to reduce wear and keep the nozzle orifice clear
- Minimum Pressure: 2,000 PSI
- Maximum Pressure: 5,000 PSI
- Maximum Temperature: 212° F
- Minimum Flow: 3 GPM
- Maximum Flow: 8 GPM
- Astounding 4,000 RPM cleans deeper and faster
- Inlet: Stainless Steel water filter with 1/4" quick connect (attaches to the tip of the wand)
- Wear-resistant ceramic nozzle and rugged housing for longer life
- Patent spring loaded nozzle can be started in any position
- Weight: 1.10 lbs
- Can be used with all JET pressure washers

Long Range Soaper Nozzle

291408 / PWTWGC

- Apply detergent and soap from up to 20 feet away
- Rated to 4,000 PSI
- Brass and hard plastic construction
- Uses 1/4" quick connects
- Variable spray for straight stream or flat fan spray
- Can be used with all JET pressure washers

3,200 PSI Rotary Nozzle

291427 / PWRNSD

- This rotary nozzle cleans faster than a regular nozzle using a rotating roto spray
- Great for stripping paint or cleaning concrete surfaces
- Use with any pressure washer equipped with quick connect and a minimum of 2.0 GPM of water flow
- Can be used with all JET pressure washers

18' Telescoping Wand

291407 / PWTW18

- Clean up to 18 feet high without a ladder
- Easily reach soffits, fascia, siding and gutters from the ground
- Comfortable padded grip. Let's you work longer with less fatigue
- 3 adjustable sections with lever locks
- One 6-1/2 foot fiberglass section and two 6 foot aluminum sliding sections set up the length you need, then lock it down for even results
- Durable threaded gun
- Adaptors included for M22 and quick connect supply hoses
- Removes easily for storage and quick field adjustments
- Use your own quick connect spray tips
- Wand has a socket that accepts most quick connect spray tips
- Will also accept gutter cleaner extension (sold separately) - **291420**
- Maximum 4,000 PSI and 8 GPM; works best above 2,000 PSI
- Will not work with consumer-grade electric pressure washers
- Apply soap using your low pressure black tip and siphon tube
- Optional Accessories: **291420** gutter cleaner



16" Flat Surface Cleaner

291400 / WHAW16

- Powerful solution to flat surface cleaning
- Designed to operate with both hot and cold water pressure washers up to 180°F
- Hover action is ideal for cleaning aggregate, stamped concrete and other flat surfaces
- Easy to handle frame is designed for less operator fatigue
- Heavy duty polypropylene cover and durable nylon brush skirt
- For use with: 9 HP or larger gasoline engines
- 16" diameter cover
- 4,000 PSI rotary head
- Zero wall clearance
- Welded steel two arm rotary bar

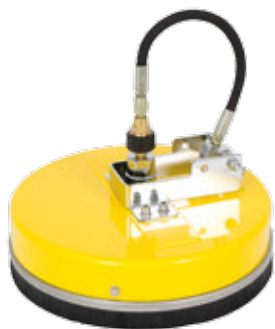


12" Pressure Washer Water Broom

291421 / PWWB12

- High pressure concrete surface cleaners or water brooms are powerful, reliable and universal in pressure washing driveways, boat decks, flat surfaces and more
- Used to clean flat surfaces quickly, easily and evenly
- Easy to maneuver - uses 2 large caster wheels provide uniform results
- Maximum pressure: 4,000 PSI
- Maximum flow: 3.0 GPM
- Inlet: 1/4" plug
- Width: 12"
- Nozzles: 3





PRESSURE WASHER ACCESSORIES

Gutter Cleaner

291420 / PWTWGC

- Gutter cleaner for use with the 291407 (PWTW18) Telescoping Wand Assembly 18 ft
- Attaches to 1/4" quick connector on many pressure washer wands
- Also great for car/truck underbody and wheel well cleaning
- Fits many pressure washer brands - snaps into 1/4" quick connection wands
- Maximum pressure: 4,000 PSI
- Maximum flow: 4.0 GPM
- Will not work with consumer electric pressure washers

12" Flat Surface Cleaner

291426 / WHAW12

- Powerful solution to flat surface cleaning
- Designed to operate with both hot and cold water pressure washers up to 180°F
- Hover action is ideal for cleaning aggregate, stamped concrete and other flat surfaces
- Connects directly to a 1/4" quick connect coupler
- Heavy duty polypropylene cover and durable nylon brush skirt
- For use with: 9 HP or larger gasoline engines
- 12" diameter cover
- 4,000 PSI rotary head

1/2 Litre Pump Oil

291424 / PWPOIL

- Ideal for high pressure pumps
- Non-detergent and non-foaming
- Specially formulated and rated for superior rust protection and oxidation protection
- Not for use in engine

Low Pressure Injector Kit

291418 / PWLPCI

- Increases your pressure washer's effectiveness
- Unique siphoning design draws chemicals or soap to aid in your cleaning flexibility
- Be sure to use the 291414 (PWQCC) connector when using this injector kit
- Maximum pressure: 4,000 PSI
- Maximum flow: 2 to 5.0 GPM
- Inlet 3/8" quick connect, Outlet 3/8" plug
- Maximum temperature: 195°F

Chemical / Soap Injector Hose Assembly

291419 / PWCIIA

- Includes 4 ft hose and suction filter



2.5" Pressure Washer Gauge Kit

291417 / PWGAKT

- Gauge kit with quick connect
- Installs on the outlet of the pump to measure system performance
- Size: 2.5"
- Inlet: 3/8" quick connect plug
- Outlet: 3/8" quick connect plug
- Maximum pressure: 5,000 PSI
- Pressure gauges enable the user to see what pressure levels their system is developing. Accurate gauges can warn of internal pump damage, cavitation, pressure spikes, and other problems
- Glycerin filled
- When selecting your pressure gauge, always allow at least 10% above the maximum capacity of your unit. For example: if your machine is rated 4,000 PSI, you must purchase a gauge that has a maximum range of 5,000 PSI



Quick Connect Fittings Kit

291422 / PWCKIT

- Quick Connects allow equipment to be installed or removed quickly and safely without drips and leaks.
- Comes with 1/4 and 3/8 coupler and plug
- Maximum Pressure: 4,000 PSI
- Temperature: up to 160° F
- Connects hose to hose, hose to gun or hose to pump



O-Ring and Filter Kit

291423 / PWORKT

- Replacement O-ring and filter for hose and wand connectors



Three Position Pivot Coupler

291416 / PWPVCP

- Adjustable high pressure coupler for end of spray wand
- Maximum Pressure: 4,000 PSI
- 1/4" quick connect
- Pivots 90°





Axial Pump

This plunger pump will pump up to 2.5 GPM at 3,000 PSI. It spins at 3,400 RPM in a direct drive system coupled with a gasoline engine. The matching flange provides convenient connection to most 3/4" shaft 1.1 - 5.5 HP engines. The hollow shafted pump includes a built-in pressure control valve, and chemical injection system.



Triplex Pump

Triplex series are designed for direct drive on gasoline engines ranging from 5-13 HP. Intended use for medium to heavy tasks; this triplex plunger pump features the latest in design and technology. Life tested over 500 hours at maximum performance of 4 GPM at 4,000 PSI. The triplex series features a compact and efficient intergrated unloader valve and fixed chemical injector.

PRESSURE WASHER PUMPS

3,000 PSI Pressure Washer Axial Pump

291401 / JAP700

- Maximum flow: 2.5 GPM
- Maximum pressure: 3,000 PSI
- Engine speed: 3,400 RPM
- 4 bolt flange fits on horizontal direct drive pressure washer engines 5 to 7 HP
- Die cast aluminum body with brass head
- Quick connect fittings connect to quick connect high pressure hose
- Screw-type fittings (M22) connects to screw-type high pressure hose
- Garden hose fitting with screen washer
- Chemical injector with soap hose and filter
- Adjustable pressure unloader
- Thermal relief valve

3,100 PSI Pressure Washer Triplex Pump

291403 / JAP710

- Maximum flow: 3.0 GPM
- Maximum pressure: 3,100 PSI
- Engine speed: 3,400 RPM
- 4 bolt flange fits on horizontal direct drive pressure washer engines 5 to 7 HP
- Die cast aluminum body with brass head
- Quick connect fittings connect to quick connect high pressure hose
- Screw-type fittings (M22) connects to screw-type high pressure hose
- Garden hose fitting with screen washer
- Chemical injector with soap hose & filter
- Adjustable pressure unloader
- Thermal relief valve

4,000 PSI Pressure Washer Axial Pump

291402 / JAP715

- Maximum Flow: 4.0 GPM
- Maximum Pressure: 4,000 PSI
- Engine Speed: 3,400 RPM
- 4 bolt flange fits on horizontal direct drive pressure washers 8 to 15 HP
- Die cast aluminum body with brass head
- Quick connect fittings connect to quick connect high pressure hose
- Screw-type fitting (M22) connects to screw-type high pressure hose
- Garden hose fitting with screen washer
- Chemical injector with soap hose and filter
- Adjustable pressure unloader
- Thermal relief valve

WATER PUMPS



- Commercial grade aluminum housing
- Recoil start and low oil shutdown
- Centrifugal aluminum pump
- Cast iron impeller and volutes
- Commercial duty mechanical ceramic seal
- Heavy duty commercial frame

2" Water Pump **291037** / JWP20L

3" Water Pump **291038** / JWP30L

4" Water Pump **291039** / JWP40L

PROD. NO.	291037	291038	291039
Inlet or Discharge	2" NPT	3" NPT	4" NPT
Engine	JET	JET	JET
HorsePower	212 cc	212 cc	420 cc
Maximum Flow	158 GPM	264 GPM	422 GPM
Total Lift	82 ft	85 ft	98 ft
Suction Lift	26 ft	26 ft	26 ft
Fuel Tank Capacity	.95 GAL (3.6 l)	.95 GAL (3.6 l)	1.7 GAL (6.5 l)
Impeller or Volute	Iron	Iron	Iron



- Commercial grade aluminum housing
- Recoil start and low oil shutdown
- Centrifugal aluminum pump
- Cast iron impeller and volutes
- Commercial duty mechanical ceramic seal
- Heavy duty commercial frame

2" Water Pump **291031** / JWP20GX

3" Water Pump **291033** / JWP30GX

4" Water Pump **291035** / JWP40GX

PROD. NO.	291031	291033	291035
Inlet or Discharge	2" NPT	3" NPT	4" NPT
Engine	Honda	Honda	Honda
HorsePower	GX200	GX200	GX390
Maximum Flow	158 GPM	264 GPM	422 GPM
Total Lift	82 ft	85 ft	98 ft
Suction Lift	26 ft	26 ft	26 ft
Fuel Tank Capacity	.82 GAL (3.1L)	.82 GAL (3.1L)	1.8 GAL (6.1L)
Impeller or Volute	Iron	Iron	Iron



291038



291039



291033



291035



TRASH PUMPS



- Commercial grade aluminum housing
- Cast iron impeller and volutes
- Commercial duty mechanical ceramic seal
- Low oil shut off
- Heavy duty commercial frame



291066



291068



291056



291060

2" Trash Pump **291066** / JTWP20L

3" Trash Pump **291067** / JTWP30L

3" Trash Pump - High Output **291068** / JTWP30LH

4" Trash Pump **291069** / JTWP40L

PROD. NO.	291066	291067	291068	291069
Engine	JET	JET	JET	JET
HorsePower	212 cc	212 cc	420 cc	420 cc
Maximum Flow	158 GPM	264 GPM	370 GPM	580 GPM
Total Lift	85 ft	85 ft	98 ft	95 ft
Suction Lift	26 ft	26 ft	26 ft	26 ft
Solids up to	5/8"	1"	1"	1"
Fuel Tank Capacity	.95 GAL (3.6 l)	.95 GAL (3.6 l)	1.7 GAL (6.4 l)	1.7 GAL (6.4 l)
Intake and Outlet Connection	2"	3"	3"	4"

POWERED by HONDA

- Commercial grade aluminum housing
- Cast iron impeller and volutes
- Commercial duty mechanical ceramic seal
- Low oil shut off
- Heavy duty commercial frame

2" Trash Pump **291056** / JTWP20GX

2" Trash Pump - High Output **291060** / JTWP20GXH

3" Trash Pump **291058** / JTWP30GX

PROD. NO.	291056	291058	291060
Engine	Honda GX200	Honda GX200	Honda GX200
HorsePower	196 cc	196 cc	196 cc
Maximum Flow	158 GPM	264 GPM	180 GPM
Total Lift	85 ft	85 ft	88 ft
Suction Lift	26 ft	26 ft	26 ft
Solids up to	5/8"	1"	13/16"
Fuel Tank Capacity	.82 (3.1 l)	.82 (3.1 l)	.82 (3.1 l)
Intake and Outlet Connection	2"	3"	2"

TRASH PUMPS

POWERED by
HONDA™

- Commercial grade aluminum housing
- Cast iron impeller and volutes
- Commercial duty mechanical ceramic seal
- Low oil shut off
- Heavy duty commercial frame

3" Trash Pump 291061 / JTWP30GXH

4" Trash Pump 291062 / JTWP40GXH

PROD. NO.	291061	291062
Engine	Honda GX390	Honda GX390
HorsePower	389 cc	389 cc
Maximum Flow	370 GPM	580 GPM
Total Lift	98 ft	95 ft
Suction Lift	26 ft	26 ft
Solids up to	1"	1"
Fuel Tank Capacity	1.8 GAL (6.8 l)	1.8 GAL (6.8 l)
Intake and Outlet Connection	3"	4"





CHEMICAL TRANSFER PUMPS



- Fiberglass reinforced poly pump
- Fiberglass reinforced poly impeller
- Commercial duty mechanical ceramic seal
- Low oil shut off
- Heavy duty commercial frame

2" Chemical Transfer Pump

291085 / JCWP20L

3" Chemical Transfer Pump

291087 / JCWP30L

PROD. NO.	291085	291087
Engine	JET	JET
HorsePower	212 cc	212 cc
Maximum Flow	154 GPM	265 GPM
Total Lift	115 ft	92 ft
Suction Lift	26 ft	26 ft
Fuel Tank Capacity	.95 GAL (3.6 l)	.95 GAL (3.6 l)
Intake and Outlet Connection	2"	3"



- Fiberglass reinforced poly pump
- Fiberglass reinforced poly impeller
- Commercial duty mechanical ceramic seal
- Low oil shut off
- Heavy duty commercial frame

2" Chemical Transfer Pump

291080 / JCWP20GX

3" Chemical Transfer Pump

291083 / JCWP30GX

PROD. NO.	291080	291083
Engine	Honda GX200	Honda GX200
HorsePower	196 cc	196 cc
Maximum Flow	154 GPM	265 GPM
Total Lift	115 ft	92 ft
Suction Lift	26 ft	26 ft
Fuel Tank Capacity	.82 (3.1 l)	.82 (3.1 l)
Intake and Outlet Connection	2"	3"

WATER/TRASH PUMP – DISCHARGE HOSES

- Discharge hoses come with a Camlock system
- Rated for a working temperature of 150°F
- Camlock hoses are easier to attach and detach from the pump
- Hoses lay flat for easier storage
- For non chemical use



Water Pump Discharge Hose 2" x 50'	291475 / WPD250
Water Pump Discharge Hose 3" x 50'	291476 / WPD350
Water Pump Discharge Hose 4" x 50'	291477 / WPD450

PROD. NO.	291475	291476	291477
Size (inches)	2	3	4
Length (feet)	50	50	50
Pressure (PSI)	80	65	55



WATER/TRASH PUMP – SUCTION HOSE KITS

- Suction hose help draw water away from flooded areas
- Discharge hoses come with a Camlock system and a strainer
- Camlock hoses are easier to attach and detach from the pump

Water Pump Suction Hose Kit 2" x 25'	291478 / SHK225
Water Pump Suction Hose Kit 3" x 25'	291479 / SHK325
Water Pump Suction Hose Kit 4" x 25'	291480 / SHK425

PROD. NO.	291478	291479	291480
Size (inches)	2	3	4
Length (feet)	25	25	25
Camlock	Aluminum	Aluminum	Aluminum
Strainer	Steel	Steel	Nylon



291478



SUBMERSIBLE PUMPS - HEAVY DUTY

- 304 stainless steel motor housing – superior abrasion resistance will not wear out like aluminum motor housings when pumping sandy water
- Three seal motor protection - motor is protected by double mechanical seals. Lower seal made of silicon carbide/silicon carbide and upper seal is made of carbon/ceramic. An additional lip seal has been installed above the impeller, to help prevent abrasives such as dirt, silt or sand, from entering into the seal chamber
- More motor protection – winding protection and (NEMA) Class F motor insulation allows motor temperature to raise to 230°F, superior to pumps with Class A and B insulation. Automatic switch turns pump motor off if temperature and/or amp draw raises too high. When the motor cools the switch will automatically reset and the pump will turn back on
- Tough pump construction – hardened cast iron stands up to rough handling and pumping sandy water unlike pumps with soft resin impellers or plastic exterior components

1/2 HP Submersible Pump

290771 / R400-115

- Ideal for dewatering constructions sites, mines, circulating fountain water, or for all around use in industrial plants and utilities
- Top discharge – allows for superior cooling of motor and provides a slim line design
- Longer power cord – standard 33' power cord

1 HP Submersible Pump

290774 / R750-115

- Ideal for dewatering constructions sites, mines, circulating fountain water, or for all around use in industrial plants and utilities
- Top discharge – allows for superior cooling of motor and provides a slim line design
- Longer power cord – standard 50' power cord

1/2 HP Submersible Trash Pump

290784 / SV400-115

- Equipped with vortex impellers, undoubtedly the best non-clog impellers ever invented for the handling of mud, raw sewage, viscous liquids, rags, wood chips and other solids. They pass solid up to 90% of pump outlet diameter
- Longer power cord – standard 33' power cord

Accessories:

Pump Float Switch 0.5 HP (290791) & 1 HP (290792)

PROD. NO.	290771	290774	290784
Motor Rating (HP)	0.5	1	0.5
Max. Flow (GPM)	50	89	59
Max. Head (feet)	36	49.5	22
Pump Type	Top discharge, dewatering	Top discharge, dewatering	Non-clog vortex
Discharge Size	2" NPT-M	2" NPT-M	2" NPT-M
Max. Submerged Depth (feet)	65	65	65
Motor Casing	304SS	304SS	304SS
Pump Volute	Cast Iron	Cast Iron	Cast Iron
Impeller	Cast Iron	Cast Iron	Vortex Cast Iron
Lip Seals and O-Rings	Buna-N	Buna-N	Buna-N
Rotor Shaft	304SS	304SS	304SS
External Hardware	304SS	304SS	304SS
Qty. Oil in Seal Chamber (US oz)	1.35	3.7	5.1
Motor RPM	3,450	3,450	3,450
Motor Insulation	Class F	Class F	Class F
Motor Service Factor	1.1	1.1	1.1
Voltage	115v, 1ph-60hz	115v, 1ph-60hz	115/230v, 1ph-60hz
Current	F.L.A. 6	F.L.A. 6	F.L.A. 6
Motor Protection	Thermal Breaker	Thermal and Amp Overload	Thermal Breaker
Power Cord	Gage; Length A.W.G. 16/3; 33', Stow	Gage; Length A.W.G. 14/3; 50', Stow	Gage; Length A.W.G. 16/3; 33', Stow
Max. Liquid Temperature	104° F	104° F	104° F

WARRANTY

WARRANTY POLICY

JET EQUIPMENT & TOOLS LTD. (JET) makes every effort to ensure its products are manufactured to the highest standards and are guaranteed against defects in materials and workmanship when the product is used for the purpose for which it was designed.

This guarantee applies only to JET products purchased new from a JET authorized distributor.

JET product warranties are extended to the original retail purchaser only.

This warranty does not apply to any product showing signs of abuse, misuse, alteration, or having been improperly maintained or repaired.

This warranty does not cover damage attributable to normal wear and tear.

Any JET product that fails during normal use and is within the specified warranty period for that product will be repaired or replaced at JET's discretion. Repairs and/or replacements are warranted as described for the specific product and only for the remainder of the original warranty period.

Repair or replacement is the exclusive remedy for defective product under this warranty.

Warranty is expressly in lieu of all other warranties, including the implied warranty of merchantability or any implied warranty of fitness for a particular application.

In many cases repairs may be accomplished by simply replacing a component, please contact JET regarding warranty procedures on Pressure Washers and Water Pumps, Western Canada 1-800-472-7685, Eastern Canada 1-800-387-3879. If it is deemed necessary that the product must be sent in for repair, it must be returned PREPAID to an authorized JET distributor or service centre. Authorized Warranty Depots may be found at www.surewerx.com.

ALL warranty claims must be accompanied by proof of purchase and an explanation of the defect or failure. It is the customer's responsibility to provide this information.

JET shall not be held liable for any consequential or incidental damages for breach of any expressed or implied warranty on their products. No claims for damages of any type will be considered and all products are sold with this understanding.

Any costs incurred to obtain warranty consideration or services are the Customer's responsibility including shipping and handling, travel, lost time, or lost production.

PRESSURE WASHERS, WATER PUMPS AND GENERATORS

(i) One year if purchased by a retail consumer for regular domestic use; or (ii) 90 days if purchased for professional, commercial, industrial or rental use, in each instance from the date of original purchase.

All Triplex pumps carry a three year warranty against manufacturer's defects. Axial pumps carry a one year warranty. Note: this warranty only applies to defective manufacturer's workmanship as determined by the applicable manufacturer. This warranty does not apply where neglect, abuse, or "normal wear and tear" is involved. Items such as seal and valve kits are considered normal wear items. When commercially used, the warranty period is 90 days.

Honda Engine warranty is per manufacturer's warranty policy as per the engine owner operator's manual.

All accessories and components, are warrantable for 90 days against manufacturer's defects. Flat surface cleaner heads are warrantable for six months. Rotary nozzles are warrantable for repair only for 30 days from purchase date.

The warranty on pressure washer or water pumps do not cover repair damage due to freezing, chemical deterioration, rust, corrosion, scale build up, or failure to maintain adequate water supply.

SUBMERSIBLE PUMPS

One year limited warranty. Not included in this warranty are components and accessories which are considered consumable items or are subject to normal wear and tear.